

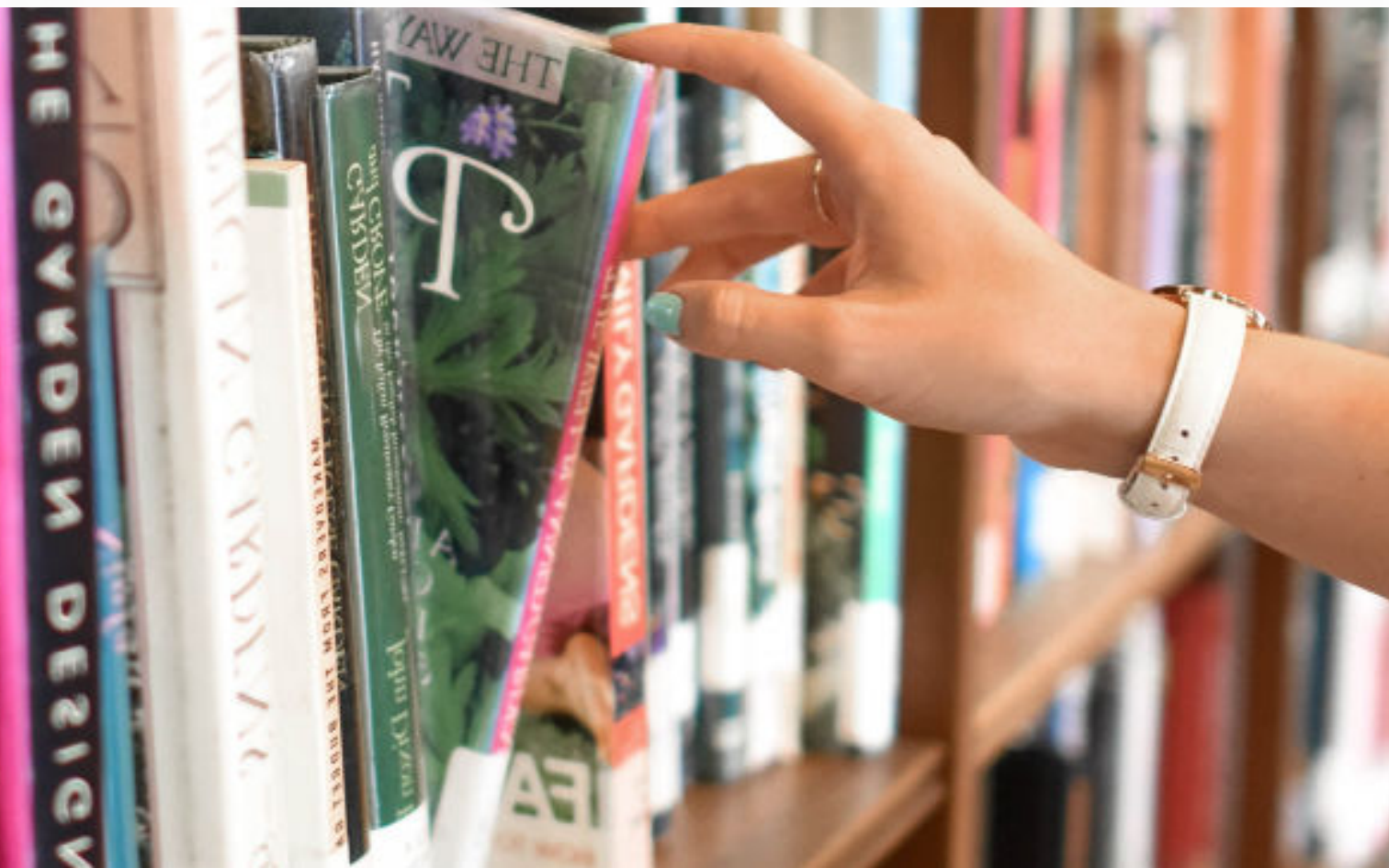


Find the school

FRANCE that fits your child...

THE LYON AREA
GUIDE TO
INTERNATIONAL
SCHOOLS
2023

ONLY
 **LYON**
INVEST



Education in France

General information on education in France	5
Schooling in France:	
- Full and part-time day care	8
- Elementary school	9
- Junior High and High School	9
- The High School diploma (Baccalauréat)	11
- Higher education	11

International schools in the Lyon Area

Introduction	13
Overview of schools by grade level	14
Accreditation systems	16
The International Baccalauréat (IB)	16
The main types of international schooling	17
The various foreign diplomas that you can study for in Lyon	17

Schools in the Lyon area offering international education

Map of schools	19	École des Grillons	29
Establishments		École les Lettres Dorées	30
DAY CARE CENTERS		English School of Lyon - ESL Lyon	31
Apple Pie	20	Greenfield	32
Baby Nursery	21	International School of Lyon (ISL)	33
Bébés Bilingues	22	Junior Academy	39
Junior School	40	Montessori	41
Kindertreff	40	École Montessori - Lyon Confluence	42
Palomitas	44	New School	42
Tiramisú	48	Ombrosa	43
		Le Petit Monde	46
		École Steiner / Waldorf	47
		West Point	48
PRE SCHOOLS		JUNIOR HIGH AND HIGH SCHOOLS	
Assomption Bellevue	21	Assomption Bellevue	19
Bonvena - Les Petits Plus	22	Cité Scolaire Internationale et ses sections (CSI)	21
École de l'Optimiste de l'Ouest Lyonnais	28	International School of Lyon (ISL)	33
École les Lettres Dorées	30	Jean Perrin	34
English School of Lyon - ESL Lyon	31	Ombrosa	43
Greenfield	32	Collège Paul Emile Victor	45
International School of Lyon (ISL)	33	École Steiner / Waldorf	47
Junior Academy	39	OTHERS	
Montessori	41	Lyon Hoshu Jugyoko -	
École Montessori - Lyon Confluence	42	Association pour le développement	
New School	42	de la langue et de la culture japonaises	49
Ombrosa & The Nursery	44	Teremok	49
Le Petit Monde	46		
École Steiner / Waldorf	47	Frequently Asked Questions	50
West Point	48		
ELEMENTARY SCHOOLS		Directory	52
Assomption Bellevue	19	Glossary	53
Cité Scolaire Internationale et ses sections (CSI)	23		
École de l'Optimiste de l'Ouest Lyonnais	28		

Every effort has been made to ensure that the information in this guide is accurate and up-to-date, especially on the basis of information provided by the schools. We do not accept any responsibility for any errors or omissions. This guide is not, however, intended to be comprehensive.

You and your family will soon be coming to Lyon and we hope it will be a wonderful professional and personal experience for you. Before you arrive, you will have many arrangements to make for your new life here.

Relax! The people of Lyon will welcome you with open arms and will gladly help you find your way around and give you plenty of practical advice.

Your quality of life is a crucial aspect of your relocation project, and you have questions about things such as where to enroll your children in school, how will they learn French, will they be able to make a smooth return to the school system in your home country, and so on.

We know that the success of any expatriate assignment depends largely on the assimilation and well-being of the family. This is why we have decided to publish a guidebook about schooling in our region.

You will find a presentation of the various educational possibilities, as well as an overview of the schools in Lyon offering an international curriculum. We want to help you to make the right choice for your child, based on his or her background, preferences and ambitions.

In Lyon, we are committed to providing full care service for you, and especially for your children!

Education in France

Class equivalents by age group

Age	France	U.S.A.	England	Italy	Spain	Japan	Germany	Sweden	Poland	
-1	crèche	Nursery								
1 yr					Asilo nido	Educación infantil 1° ciclo		Krippe / Kinderkrippe		
2 yrs	maternelle		Nursery school					Day Nursery		
3 yrs										
4 yrs			Kindergarten		Scuola Materna	Educación infantil 2° ciclo	Kindergarten	Kindergarten		
5 yrs	year 1					Kindergarten				
6 yrs	CP	1st grade	year 2	prima elementare	Educación primaria 1° ciclo	Elementary school	Grundschule			
7 yrs	CE1	2nd grade	year 3	seconda elementare					1st grade	Education Primaire
8 yrs	CE2	3rd grade	year 4	terza elementare	Educación primaria 2° ciclo				2nd grade	Swiadectwo Ukonczenia Szkoly Podstawowej (certificat de fin d'études primaires)
9 yrs	CM1	4th grade	year 5	quarta elementare					3rd grade	
10 yrs	CM2	5th grade	year 6	quinta elementare	Educación primaria 3° ciclo				4th grade	
11 yrs	sixième	6th grade	year 7	prima media			5th grade			
12 yrs	cinquième	7th grade	year 8	seconda media	Educación secundaria	Junior High School	Hauptschule/ Realschule/ Gymnasium	6th grade		
13 yrs	quatrième	8th grade	year 9	terza media	Educación secundaria				7th grade	
14 yrs	troisième	9th grade	year 10	prima liceo	Educación secundaria				8th grade	Lyceum S.D. / S.U.L.
15 yrs	seconde	10th grade	year 11	seconda liceo	Educación secundaria	High School	Gymnasium Abitur	9th grade		
16 yrs	première	11th grade	year 12	terza liceo	bachillerato				1st grade Gymnasium	
17 yrs	terminale Bac	12th grade	year 13 A level	quarta liceo	bachillerato				2nd grade Gymnasium	
18 yrs				quinta liceo esame di maturità				3rd grade Gymnasium	Dyplom Magistra (5 ans)	
19 yrs										

General information on education in France

Public or private schools?

* **Public schools** are managed by the National Education Ministry. School is **free** (except for some international sections which charge tuition fees) and **secular** (visible signs of religion are not accepted at school).

* **Private schools** account for approximately 15% of the students in elementary school and 20% in Junior High and High School. Private schooling is essentially made up of schools that are under contract ("sous contrat") with the State (which pays the entire salary of all the teachers and administrative staff working at the school). Private schools that are not under contract ("hors contrat") educate approximately 50,000 students in France.

Private schools charge tuition fees, the cost of which varies depending on family income and the number of children in the household. There are some **private religious schools** (mainly Catholic, Jewish, Protestant and Armenian, etc.). In these schools, students have at least one hour of optional religious education classes per week.

→ Parents are responsible for buying school supplies: plan on a budget of around €150 as every teacher requires different supplies. In elementary and Junior High School, books are provided by the school. In High School, the student or parents must purchase them. A family assistance center, the CAFAL (Caisse d'Allocations Familiales de Lyon) provides aid to families to purchase school supplies, based on family income and the number of children in the household.

→ The Rhône-Alpes regional authorities have created for Young people aged 16 - 25 a "M'ra!". This card entitles students to discounts on textbooks and sports and cultural activities. www.rhone-alpes.fr

Where can you register your child?

* **Public schools**

Elementary (from 2 to 10 years of age): You must contact your local District Hall to find out the school corresponding to your neighborhood (based on the list drawn up by the school district) and pre-enrol your child there. You then make an appointment with the head of the school to confirm the enrolment.

→ To register, go to your local District Hall with the originals of the following documents:

- your "livret de famille"¹ (if you have one), ID, or copy of your birth certificate
- vaccination records (DT-Polio Diphtheria, tetanus and poliomyelitis) or the child's medical records ("carnet de santé")
- a proof of residence ("justificatif de domicile") less than 3 months old

The list of District Halls can be found at: www.lyon.fr

- enrolment can be completed on-line for schools in Lyon at www.lyon.fr under Enfance et Education

Junior High School: You must register your child in the Junior High School of the area in which you reside (check with the District Hall). However, a waiver may be granted by the school district authorities (Inspecteur de l'Académie) if you wish to register your child in another Junior High School outside of your neighborhood.

High School: Registration depends on the type of curriculum the student has chosen to follow and available space in the High School of your district. The school district authorities (Inspecteur de l'Académie) may grant a waiver when a student has chosen another school that is outside of their district.

By contrast, private schools and international schools (elementary, Junior High or High School) do not recruit students from a specific geographical area. In other words, parents may choose where to send their children.

1- The Livret de Famille is an official record of the composition of a family. It is required in order to obtain official papers such as an identity card, passport, etc.
→ www.service-public.fr

2- The Carnet de Santé booklet details a person's medical history → www.pratique.fr

3- The Justificatif de Domicile is proof that you have purchased a home or are renting one or electricity/gas (edf/gdf) bill or phone bill.

You must register your child directly with the school principal. Admission is based on the number of available places (phone the school as soon as possible).

→ **For registration in an international school, please provide the following: any previous report cards; a photocopy of the child’s passport; proof of residence in France (phone bill, electricity bill, etc.); and proof of personal liability insurance and school insurance which can be obtained directly at the school. Four vaccinations (DT-Polio Diphtheria, tetanus and poliomyelitis) are required.**

What is the school week like?

In **elementary school**, the school week can be either 4 days – Monday, Tuesday, Thursday and Friday – or 4 ½ days (Wednesday morning).

In **Junior High/ High School**, classes are held Monday through Friday and, in some cases, on Saturday mornings as well.

Wednesdays

In **elementary school**, Wednesday is generally considered as a day for the children to rest and do sports or cultural activities. Working parents may wish to take their children to outdoor activity centers (called “centres aérés” in French) located in their neighborhood or town (check with your local District Hall).

Recess (called “récré” in French)

Recess is held in the morning and the afternoon in the school grounds. It lasts between 15 and 30 minutes and gives children a chance to relax by playing with their friends.

Holidays

To stagger vacation dates around the country, the National Education Ministry has created 3 geographical areas:

zone A (including the schools of Besançon, Bordeaux, Clermont-Ferrand, Dijon, Grenoble, Limoges, Lyon, Poitiers)

zone B (including the schools of Aix-Marseille, Amiens, Caen, Lille, Nancy-Metz, Nantes, Nice, Orléans, Tours, Reims, Rennes, Rouen, Strasbourg)

zone C (including the schools of Créteil, Montpellier, Paris, Versailles, Toulouse)

→ www.education.gouv.fr

Official school holidays

January	1st (New Year’s Day)
March / April	Easter Sunday and Monday*
May	1st (Labor Day), 8th (To celebrate the End of WWII), and Ascension Thursday*
May or June	Pentecost Monday*
July	14th (Bastille Day, the national holiday)
August	15th (the Assumption)*
November	1st (All Saints Day)*, 11th (Armistice Day)
December	25th (Christmas)*
* religious holidays	

What are school lunches like?

In **elementary school**, children have a lunch break between 11:30 am and 1:30 pm They can either go home for lunch or eat in the school cafeteria on a regular basis or just occasionally. In France, school cafeterias provide a complete, well-balanced meal. There are no sandwiches and parents don’t need to prepare anything. Generally, children with working parents are given first priority for registering to eat in the school cafeteria In **Junior High and High School**, students eat between noon and 2 pm (in some cases, they may have only 40 minutes to eat lunch). They may eat in the cafeteria, go home for lunch or eat outside with their friends (with parental permission).

There is a charge for school lunches. You may register your child at the beginning of the school year for the entire year. If your child will be eating at the cafeteria on an occasional basis only, you can buy meal vouchers or cards from the school. Contact your child’s school directly for more information on its cafeteria.

“French-style” education

- In 1882, Jules Ferry, Minister of Public Instruction, imposed a policy of secular, free and mandatory schooling for all children aged 6 to 13 (16 years old after 1967) in public and private schools.
- No uniform or other special clothing is required for French schoolchildren.

- The general education curriculum emphasizes theory-based classroom learning. After 9th grade (troisième), students must choose the type of curriculum they wish to follow in High School, e.g. a technical/vocational curriculum or a general one with an emphasis on math/science, literature/languages or economics/social studies. This is known as “orientation” in French.
- Students have class in the morning and afternoon. They have assignments to do either at home or at a type of study hall (known as “l’étude” in French) after class. Assignments to be done at home teach students how to plan out their workload over several days.

- In France, the decision to have a student stay back and repeat a grade level is made by all of the student’s teachers. Having a child repeat a grade level enables them to consolidate their knowledge and give them a better chance at succeeding in the next grade up. Repeating a grade level should not be considered as a punishment! It is a strong recommendation, not a mandatory ruling, and parents may “appeal”² the decision to have their child repeat a grade level.
- Student progress is checked constantly and the students are tested regularly in each subject. Students with disciplinary problems or those who do not study seriously enough may be punished (“collé” in French): they must go to school to do an assignment outside normal class hours (Wednesday afternoon or Saturday morning, for example).
- The school year is divided into three terms. At the end of each term, parents receive their child’s report card (“bulletin de notes”).
- In elementary school, homework assignments and tests are graded from 0 to 10 (0 being the worst grade and 10 the best). In Junior High and High School, the grading scale ranges from 0 to 20.

- In France, grading may be very harsh, and it also takes the consistency of a student’s work into account. The most important thing is to consider your child’s grades compared to the overall class average.
- In each class, two class delegates are

elected by students to represent them in meetings with teachers.

- In each class, 2 parents volunteer to represent their children, particularly at the “class council meeting” (“conseil de classe”³) held once per term, along with the class delegates. This system helps to foster open dialog between parents and teachers.
- There are also several parent associations, presented at the beginning of the school year, that play a vital role in the life of the school. They are a source of important recommendations and suggestions to the school principal. In the public sector, the main parent associations are:

Public School Parents’ Association (“F.C.P.E.” or “Fédération des Conseils des Parents d’élèves des Écoles Publiques”): **F.C.P.E. du Rhône**
16 rue Galilée - 69100 Villeurbanne
Tel. 04 37 91 65 30 / contact@fcpe69.fr
www.fcpe69.fr

Parents with Children in Public Schools (“P.E.E.P.” or “Parents d’Elèves dans l’Enseignement Public”): **P.E.E.P. du Rhône**
34 rue Viret 69100 Villeurbanne
Tel. 04 37 24 71 00 / fax 04 37 24 71 09
www.peep.asso.fr

For private schools:

Private School Parents’ Association (“A.P.E.L.” or “Association Parents d’élèves École Libre”): **U.D.A.P.E.L.**
7 rue Vaubecour - 69002 Lyon
Tel. 09 63 52 47 30
www.apel.fr

In schools with international sections, there are often specific parent associations for each section.

– In French, a school principal is called “Directeur”, if he or she heads an elementary school; “Principal”, if he or she heads a Junior High School (“collège”); and “Proviseur” if he or she heads a High School (“lycée”).

- Most schools have an infirmary. There are also counselors and psychologists from neighborhood Career Guidance Resource Centers (“Centres d’Information et d’Orientation” or “C.I.O.”) who regularly visit schools and provide assistance.

→ **For the list of Career Guidance Resource Centers (C.I.O.) in the Rhône-Alpes area: www.education.gouv.fr**

- The School Counselor (“C.P.E.” or “Conseiller Principal d’Education”) ensures students’ well-being at school and that they obey all school rules. The counselor works closely with the teachers and school management staff.
- School insurance is mandatory and parents may choose the insurance company they wish to work with. This insurance policy must be taken out as soon as a pupil is registered for school.

→ **To take out a school insurance policy, contact the school or your own insurance company.**
→ **For more information, contact the Insurance Information Center (“CDIA” or “Centre de Documentation et d’Information de l’Assurance”): www.cdia.fr**

Alternative schools

In the French education system, some schools feature specific pedagogical styles associated with ways of learning in other countries. Some of these schools, such as the Montessori and Rudolf Steiner / Waldorf schools, are known the world over. Others, such as the Chapoly School (“École du Chapoly”) and Rize School (“École de la Rize”), are alternative French methods.

School vacation periods set by the French National Education System

Vacation	Schools with 4½ -day weeks (+ Junior High + High School)	Schools with 4-day weeks
Start of school	Beginning of September	Beginning of September
All Saints Day	15 days between late October and early November	11 days between late October and early November
Christmas	15 days between late December and early January	15 days between late December and early January
Winter	15 days between mid February and early March	12 days between mid February and early March
Spring	15 days between late March and early May	11.5 days between late March and late April
Summer	End of June	Early July

Schooling in France

Day care Full-time day care centers

At what age can children start? They may start at age 2 months and remain until they enter kindergarten.

How can you register? As the demand for childcare exceeds the number of day care centers available, it is very important for you to register your child from the very beginning of your pregnancy (or, for expatriates, as soon as you have found a house or apartment). Priority is given to working mothers.

There are three different types of full-time day care: “association day care centers”, “at-home childcare providers” and “parent-run day care centers”.

*** Association day care centers:** These are monitored by the local Mother and Child Protection Services (“pml.” or “Protection Maternelle et Infantile”) and are managed by the local District Hall or by the “département” (county) where they are located.

Who is in charge of them? A specialist with a degree in childcare. At least half of the day care center staff must be certified childcare assistants. The children are regularly examined by a pediatrician assigned to the day care center.

Hours: Quite strict, from 7:00 am. to 6:30 pm

Rates: Based on family income.

To register: Contact your local District Hall or City Hall.

*** “Parent-run” day care centers:**

Who is in charge of them? The parents themselves; however, it is mandatory to have a qualified person in the center.

To register: Contact the association that manages the day care center. To obtain the

list of “parent-run” day care centers, you may contact the Small Child service (“Service Petite Enfance”) at your local District Hall or contact the National Association of Parent-Run Day Care Centers (“ACEPP” or “Association des Collectifs Enfants Parents Professionnels”), which federates all of the “parent-run” daycare centers throughout France.

Rates: Based on family income.

→ You may be eligible for discounts:

Family Assistance Center

(“Caisse d’Allocation Familiale du Rhône”)

67 boulevard Vivier Merle

69409 Lyon Cedex 03

Information: Allocaf

Tel. 08 10 25 69 80

www.caf.fr (website in French)

→ **Mother and Child Protective Services**

(“Service Protection Maternelle et Infantile” - pml.)

1 Place Latarjet - 69008 Lyon

Information: 04 72 61 43 20

allopmi.fr

→ **National Association of Parent-run day care centers** (“ACEPP Rhône-Alpes”):

3 rue Joseph Chapelle, 69008 Lyon

tél : 04 72 73 05 10

www.acepp-rhone.fr

Warning! There are also private childcare providers (who often post ads in local shops) that are not accredited.

Part-time day care centers

*** Public:**

At what age can children start? From birth.

How long? 12 hours or 3 half-days per week.

Childcare may also be available on a more occasional basis.

To register: in most cases, contact the director of the center.

*** Private:** these operate in a variety of ways.

Hours: the hours are longer than with a public part-time day care center. Parents are sometimes called upon to take care of the children.

Rates: hourly, half-daily and daily rates

are available.

Contact your local District Hall for a list of part-time day care centers.

→ There are around 200 full-time and part-time day-care centers in the Rhône area.

→ For the list of full and part-time day care centers in Lyon, contact the City Children’s Service (Service Municipal de l’Enfance) at the Lyon City Hall – Tel: 04 72 10 30 30 or visit the www.lyon.fr website, in the “enfance” section (in French)

Accredited childcare providers

This type of childcare professional takes in one or more small children in the nanny’s home.

Cost: approx. 2.72 € gross per hour (in 2016). There are additional costs for meals and supplies.

You may be eligible for aid from the CAF (family benefits fund).

The cost of childcare is tax deductible

At-home childcare providers

A nanny who minds your child at your home.

Cost: depending on the collective agreement of individual employers and the minimum wage.

Several families may join to hire one nanny.

This is known as shared childcare.

You may be eligible for aid from the CAF (family benefits fund).

The cost of childcare is tax deductible.

www.pajemploi.fr

www.mon-enfant.fr

1st grade (5-6 years)²
CP (Cours Préparatoire)
2nd grade (6-7 years)
CE 1 (Cours Élémentaire première année)
3rd grade (7-8 years)
CE 2 (Cours Élémentaire deuxième année)
4th grade (8-9 years)
CM 1 (Cours Moyen première année)
5th grade (9-10 years)
CM 2 (Cours Moyen deuxième année)

1- Child hygiene supplies include diapers, skin creams and other products, cotton swabs, etc.

Elementary school (école primaire)

www.education.gouv.fr

“le système éducatif” section (in French)

*** Pre-school** (école maternelle)

From 3 to 5 years of age, even starting at 2 years depending on the number of places available and provided that the pre-schooler is potty-trained (or “propre”¹ in French).

Levels: sections for younger (petite section), medium (moyenne section) and older (grande section) pre-schoolers.

Hours: From 9:00 to 11:30 am and from 1:30 to 4:30 pm The children may either eat at the school cafeteria or go home for lunch. Younger pre-schoolers take naps after lunch. Public and private pre-school is not mandatory but highly recommended from a pedagogical point of view. It aims to stimulate the child in a fun way and, beginning in the second year of pre-school, to teach them to read and prepare them for the equivalent of 1st grade, called “CP” or “Cours Préparatoire” in French.

To register: At the very latest, contact your local District Hall during the month of June prior to the September the child is to start school. Some towns accept registrations before June, however. Children may also be registered during the school year (at any time, if parents transferred for work reasons), and may start school after Christmas or Easter depending on their age and the available space.

*** Elementary school** (école primaire)

1st grade (5-6 years)²

CP (Cours Préparatoire)

2nd grade (6-7 years)

CE 1 (Cours Élémentaire première année)

3rd grade (7-8 years)

CE 2 (Cours Élémentaire deuxième année)

4th grade (8-9 years)

CM 1 (Cours Moyen première année)

5th grade (9-10 years)

CM 2 (Cours Moyen deuxième année)

Hours: 26 hours per week on average.

Subjects: French (9-10 hours/ week), civics (30 min./ week), math (5-5½ hours / week), basic science (3-3½ hours/week), foreign language (1-2 hours/ week), art (3 hours/week), physical education (3 hours/week).

→ For a list of pre-schools (“écoles maternelles”) and elementary schools (“écoles primaires”), check the following Web site: **www.lyon.fr** in the “Enfance et Education” section

Junior High and High School (école secondaire)

www.education.gouv.fr

“le système éducatif” section (in French)

Additional subjects: classical languages (Latin, Greek), philosophy, physics, chemistry, biology (Sciences de la Vie et de la Terre in French), economics and social sciences, technology and one of several languages, i.e. English, Spanish or German. Optional languages include Japanese, Italian, Portuguese, Russian and Arabic.

*** Junior High School** (Collège)

6th grade (Sixième; 10-11 years)

English is generally taught

as the first foreign language

7th grade (Cinquième; 11-12 years)

Classical languages (Latin, Greek)

are taught as an elective

8th grade (Quatrième; 12-13 years)

A second living language (generally

Spanish or German) is taught

9th grade (Troisième; 13-14 years)

At the end of the year, students take exams for the Junior High School diploma (Brevet des collèges) exam³

Starting in **6th grade** (“sixième”) or **8th grade** (“quatrième”), students may choose to enter a “European” section with more hours of foreign language classes: 2 additional

hours of foreign language (“LV” or “Langue

Vivante”) per week and, beginning in 10th grade (“Seconde”) courses in one or more subjects taught in the students’ main foreign language (usually history-geography).

In this case, **the diploma students earn at the end of 12th grade (“terminale”) is the Baccalauréat with European focus (Baccalauréat à mention européenne)**. This diploma is awarded if the student’s grade in his or her main foreign language (LV1) is higher than 12 out of 20. The examination for this diploma includes the standard Baccalauréat tests plus a specific test on a subject taught in the student’s main foreign language (LV1). This diploma enables students to continue their studies at foreign universities.

La Tourette secondary school, L’Ampère High School and more besides.

www.education.gouv.fr, under «orientation» (in French)

*** Orientation at the end of “troisième”**

There are three tracks:

- general curriculum

- technological curriculum

- vocational curriculum

→ To see the list of Junior High Schools (collèges) in Lyon, check the **www.lyon.fr** website in the “Enfance et Education” section.

*** High School (“Lycée”)**

From 2021, all students will be able to choose the academic pathway which fits their interests and ambitions best. In Year 11, students will make a choice of pathways which will define the type of baccalaureate they will take (Le baccalauréat, or “bac”, is the French national diploma awarded upon completion of secondary education).

1- Potty trained: a child who can use the bathroom on his/her own

2- Age reached at the beginning of the school year.

3- Brevet des collèges: a diploma awarded following a year-end exam composed of 3 written tests: French, Math and History/Geography.

1/ The general pathway

In Year 12, students will take the core subjects and 3 optional specialist subjects (3 in Year 12 and 2 in Year 13), which are chosen during Year 11.

- Core subjects: French, history/geography, civic education, modern languages A and B, PE, philosophy and sciences.

- Specialist subjects: History/geography, geopolitics and political science; Humanities, literature and philosophy; Foreign languages, literatures and cultures; Classical literature, languages and culture; Mathematics; Digital technologies and computer science; Life and earth sciences; Engineering sciences; Economics and social sciences; Physics and

chemistry; Arts (history of art, theatre, fine arts, performing arts, etc.); Biology and ecology.

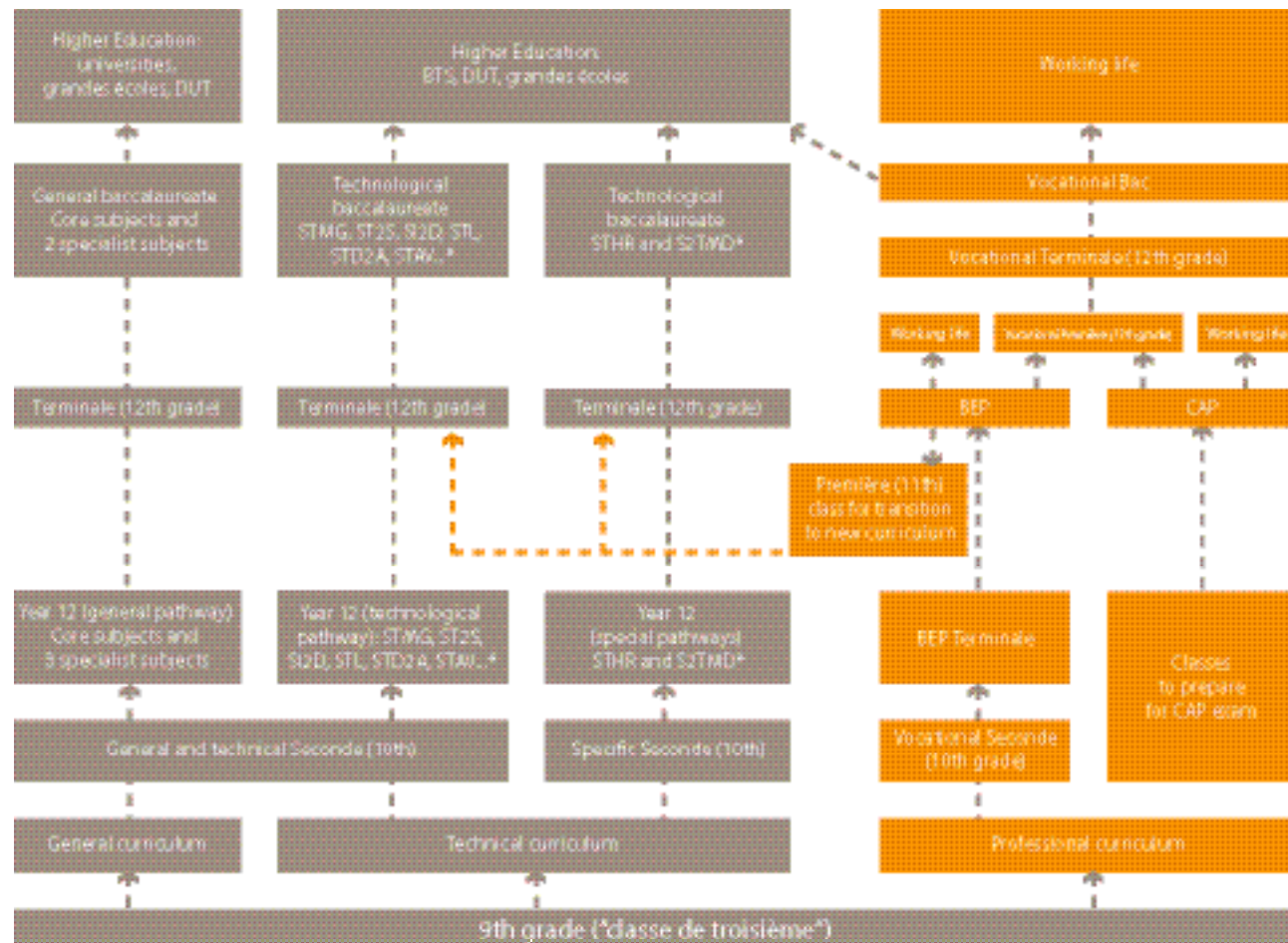
2/ The technological pathway

Students will choose this pathway at the end of Year 11. It comprises core subjects (French, history/geography, civic education, modern languages A and B, PE, philosophy, mathematics) and a specialist series of subjects, such as STMG* (management sciences and technologies), ST2S (health and social sciences), SI2D (industry and sustainable development), STL (laboratory sciences), STD2A (design and applied arts), STAV (agricultural and life science)...

→ The list of all specialist subjects is available on the "school system" page, at www.education.gouv.fr

3/ The vocational pathway

This pathway leads to a BEP (Certificate of Vocational Studies) or a CAP (Certificate of Professional Competence) in the specialist field chosen by the student. An internship contract is set-up by the school, so that students alternate between study periods and work experience.

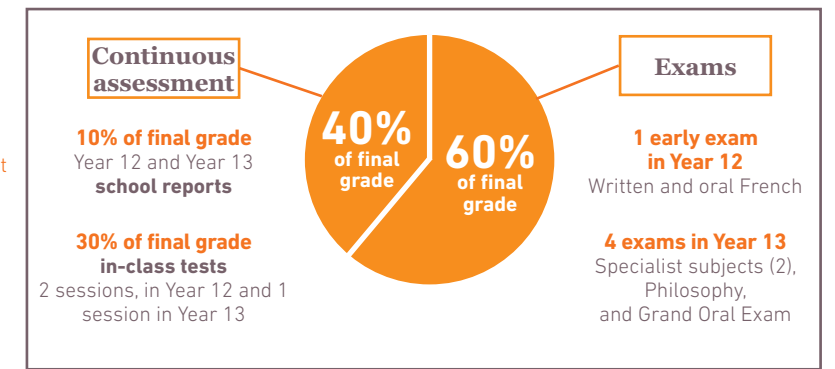


*See definition in the glossary on page 49

The Baccalaureate

The exams of the new general baccalaureate

→ Find out more on the "school system" page, at www.education.gouv.fr



Students taking the **general baccalaureate** will usually go into higher education: university, DUT (University Technology Diploma), grandes écoles.

Students taking the **vocational baccalaureate** will gain substantial in-company experience. After taking an access course, they can also enter higher education if they wish to do so.

Students in the **technological pathway** may opt for shorter studies, as their technological background enables them to enter the job market quickly. However, they can also choose 2-year further study courses, such as a BTS (Higher Technical Certificate), DUT, grandes écoles...

→ You can find the list of all the lycées in Lyon on the "childhood and education" page, at www.lyon.fr

Higher education: Diplomas

Bac+8		Doctorate (PhD)			
Bac+7		Professionally-oriented Master or Research-oriented Master (Students can obtain a maîtrise diploma at the end of the 1st year)			
Bac+6	Diplomas from grandes écoles (engineering, business, veterinary schools and the école normale supérieure)*				
Bac+5					
Bac+4		Licence (Students can also obtain a general university diploma (DEUG) at the end of the 2nd year)			
Bac+3					
Bac+2	Classe préparatoire: preparatory classes for entrance exams to the grandes écoles		DUEST (University Diploma in Scientific and Technical Studies)	DUT** (University Diploma in Technology)	BTS** (Advanced Vocational Diploma)

* Students can also enter grandes écoles after obtaining a licence at a university or a DUT degree.

** Students who have received a DUT or BTS degree, and those coming from a classe préparatoire may enter a licence program provided that part or all of their previous coursework is approved by the university.

1 Contrat d'alternance: a contract that combines theoretical training at school and on-the-job training in a company.

A photograph of a clear glass pencil holder filled with numerous sharpened pencils. The pencils are of various shades, including dark grey, black, and light grey. The holder has a textured, ribbed base. The background is a dark, muted grey.

International education in the Lyon area

Lyon has many schools offering international learning programs. In addition to French, these schools teach a wide variety of foreign languages and certain subjects are taught in the chosen foreign language. They offer an extensive range of curricula and diplomas.

Establishments by levels and languages

Establishment	Day care	Pre school	Elementary	Junior High School	High school	State school	Private accredited	Private non accredited	English	German	Spanish	Italian	Polish	Portuguese	Japanese	Chinese	Russian	Arabic	Page
Apple Pie	•						•		•										18
Assomption Bellevue		•	•	•	•		•		•	•	•	•				•	•		19
Baby Nursery	•						•		•										19
Bébés Bilingues	•						•		•										20
Bonvena - Les Petits Plus		•																	20
Cité Scolaire Internationale (CSI)			•	•	•	•			•	•	•	•	•	•	•	•		•	21-25
L'École de l'Optimisme de l'Ouest Lyonnais		•	•					•	•										28
École des Grillons			•			•			•										29
École les Lettres Dorées		•	•					•	•										30
English School of Lyon - ESL LYON		•	•					•	•										31
Greenfield		•	•				4 TH - 5 TH GRADE	•	•										32
International School of Lyon (ISL)		•	•	•	•			•	•										33
Jean Perrin				•	•	•			•	•	•	•							34
Junior Academy		•	•					•	•										39
Junior School	•						•		•										40
Kindertreff	•						•			•									40
Montessori		•	•					•	•										41
École Montessori - Lyon Confluence		•	•					•	•										42
New School		•	•				•		•										42
Ombrosa & The Nursery		•	•	•	•		Elementary	High School	•										43
Palomitas	•						•				•								44
Paul Emile Victor				•		•			•	•	•	•							45
Le Petit Monde		•	•					•	•	•		•							46
Steiner/Waldorf		•	•	•				•	•	•									47
Tiramisú	•						•					•							48
West Point		•	•					•	•										48
Lyon Hoshu Jugyoko Association pour le développement de la langue et de la culture japonaises	Native language Japanese lessons														•			49	
Teremok Association	Cultural centre for Russian-speaking children																•		49

The Accreditation System

The Anglo-Saxon accreditation system is managed by various institutions such as the New English Association of Schools and Colleges (NEASC), the European Council of International Schools (ECIS) and the Middle Schools Association (MSA), which ensure the quality of the resources and teaching available to students.

→ www.fulbright-france.org

→ www.neasc.org

→ www.ecis.org

→ La Cité Scolaire Internationale and the International School of Lyon are members of ECIS

The “International Baccalaureate” (I.B.)

The International Baccalaureate Organization (IBO), whose headquarters are located in Geneva, Switzerland, features 3 autonomous programs:

- The Primary Years Program, designed for children from 3 to 12 years of age, focuses on building students’ overall personality.
- The Middle Years Program provides students aged 11 to 16 with a framework for success in school and the development of personal skills.
- The Diploma Program, created in 1968, is a pre-college curriculum validated by examinations. It is designed for students aged 16 to 19.

* The I.B. Diploma

The program consists of a 2-year cycle. It is not based on the model of any one specific country, and has been deliberately designed as a compromise between various national school systems.

The program includes 6 groups of academic subjects:

- **Language A1:** (The language in which the student feels most at ease, often his or her native language). Includes a selection of world literature.
- **Language A2:** Language and literature courses for students with a very good knowledge of the language being studied.
- or **Language B:** Language classes for students with previous experience learning the language but who are not fully proficient.
- or **Language Ab beginner:** Language learning classes for beginners.
- **Individuals and Societies:** History, geography, economics, philosophy, psychology, social anthropology, organization and management.
- **Experimental Sciences:** Biology, chemistry, general chemistry, applied chemistry, physics and environmental systems.
- **Mathematics:** mathematics, mathematical methods, mathematical studies and further mathematics.
- **One of the following electives:** Visual arts, music, Latin, Classical Greek, computer science, a second option from the “Individuals and Societies” group or “Experimental Sciences” group, or a third modern language.

Diploma candidates must take an exam in one subject from each group: 3 or 4 subjects at “Higher Level” and the others at “Standard Level”. For each subject, a grade from 1 (the lowest) to 7 (the highest) will be given. To obtain the diploma, students must have a cumulative score of at least 24. They must also meet three additional requirements: they must write a thesis paper (approximately 4,000 words in length), attend a class on the Theory of Knowledge (which aims to develop their critical thinking skills and analyze the knowledge they have gained through their studies), and participate in an extracurricular activities program called “CAS” (Creation, Activity, Service).

Only schools that are accredited by the International Baccalaureate Organization are authorized to teach the programs and register candidates for the examination.

The I.B. is currently recognized in 113 countries, enabling students to go on to study at foreign universities without taking language tests. It is open to all well-prepared candidates from any country in the world.

The 3 working languages of the I.B. are English, French and Spanish.

→ For further information: www.ibo.org

www.uwc-france.org

→ O.I.B.: 15, rue des Morillons / CH 1218

Grand Saconnex / Genève / Suisse

Tel. 00(4122) 309 25 40

* The International Baccalaureate in Lyon

In Lyon, two schools are accredited by the (IBO) in Geneva to teach the International Baccalaureate (IB) program and issue the diploma. The program is taught in 11th and 12th grade.

The IB program can be taught and the exams taken in other languages.

At Ombrosa, classes are bilingual: subjects are studied in English and in French and exams may be taken in both languages.

At the International School of Lyon, classes and exams are in English for all subjects.

The availability of the International Baccalaureate in Lyon is proof of the Lyon region’s commitment to developing international education and to meet the needs of all types of incoming families.

→ Where?

At Ombrosa and at the International School of Lyon.

The main types of international schooling in Lyon

Sections preparing for the Baccalaureate with International Option

Aims: to offer appropriate schooling to children with a command of a foreign language.

Curriculum: 4 hours of history-geography, including 2 taught in the chosen foreign language.

4 hours of foreign literature taught in the chosen foreign language.

Diploma: French Baccalaureate with International Option:

Standard exams + oral and written language, literature and history-geography exams.

→ Note: The exams taken in the foreign language have a very high coefficient, enabling students who do not fully master French to nevertheless obtain the Baccalauréat diploma, provided that they do well on the tests in their native language (or in the foreign language they have chosen).

Who may apply? Foreign students who wish to be integrated in the French system. French students with excellent knowledge of the chosen foreign language. Selection is based on a test in the student’s foreign language and his or her grades in other subjects studied.

→ Where?

At Cité Scolaire Internationale (English, German, Italian, Spanish, Japanese, Portuguese and Polish sections), Arabic (2014), Chinese (2019).

The various diplomas and certificates that you can prepare for in Lyon

* **IGCSE (International General Certificate of Secondary Education):** This is designed for international schools and especially British schools. There is a 2-year preparation for this exam, during which students follow a curriculum determined by Cambridge University. The general curriculum is designed for students from 14 to 16 years of age. This internationally-recognized degree enables students to prepare for the English A and AS Levels.

→ Cambridge International Examinations 1 Hills Road Cambridge CB1 2EU United Kingdom

Tel. +44 (0) 122 355 3554

fax +44 (0) 122 355 3558

www.cie.org.uk

→ Where?

At Cité Scolaire Internationale, Ombrosa and the International School of Lyon

* SAT (Scholastic Aptitude Test) and PSAT (Preliminary Scholastic Aptitude Test): Students wishing to attend American universities must take these before applying.

→ www.fulbright-france.org

→ www.collegeboard.org

→ Where?

At Cité Scolaire Internationale and the International School of Lyon

* **TOEFL (Test of English as a Foreign Language):** Assesses the English language skills of non-native English speakers. Most American and Canadian universities use TOEFL results as part of their admissions process for foreign students.

→ www.toefl.org

→ www.fulbright-france.org

→ Where?

At Cité Scolaire Internationale and Assomption Bellevue

* ESOL Cambridge (English for Speakers of Other Language):

Cambridge certificates are recognized all over the world by universities, employers and National Education authorities as tangible proof of qualification in the English language:

FCE (First Certificate in English)

→ Where?

At Cité Scolaire Internationale, Assomption Bellevue and Ombrosa

CAE (Certificate in Advanced English)

→ Where?

At Cité Scolaire Internationale and Ombrosa

CPE (Certificate of Proficiency in English)

→ Where?

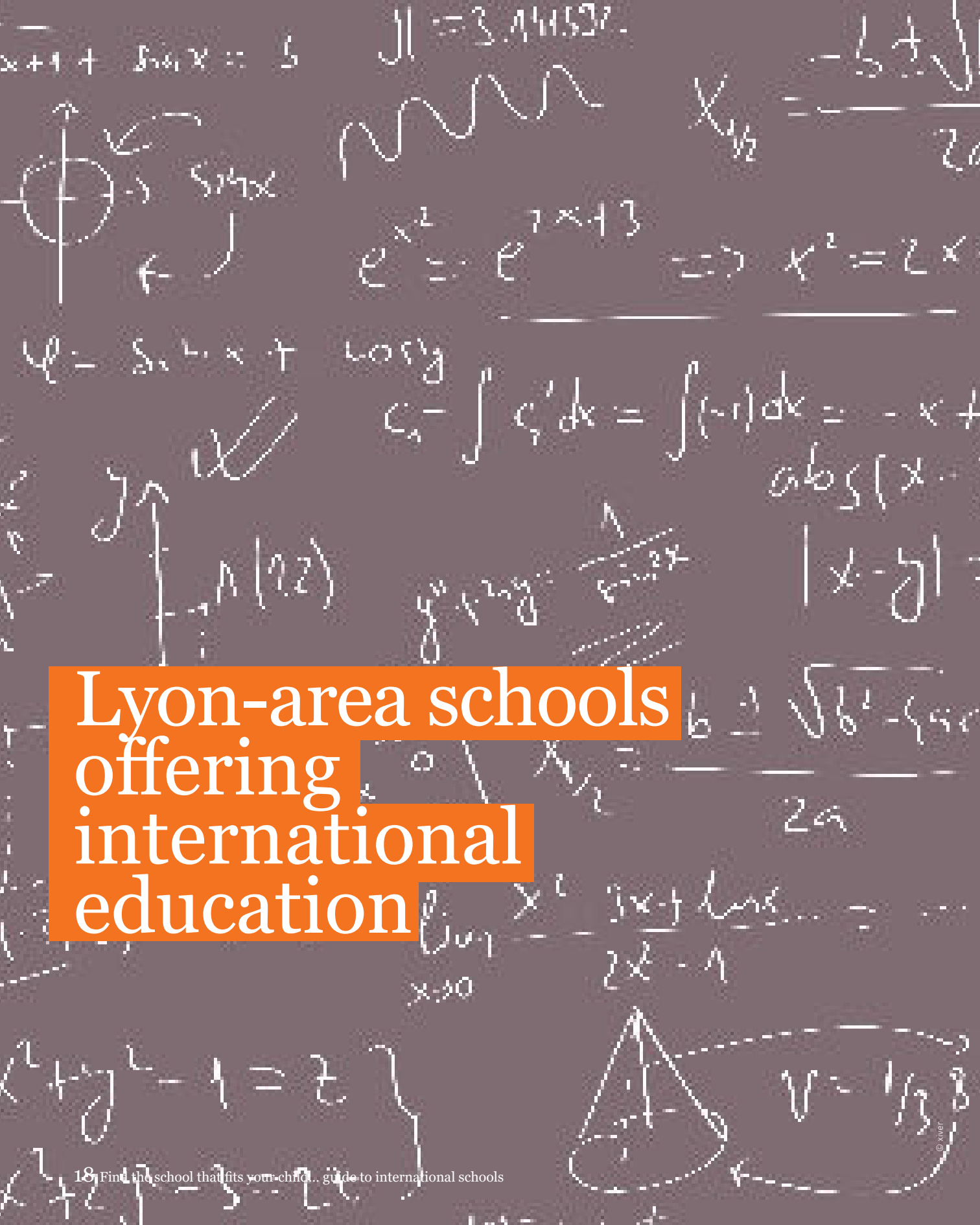
At Cité Scolaire Internationale and at Ombrosa
www.cambridge-efl.org/index.html

* Abitur: German High School diploma (corresponds to the French Baccalaureate).

Some schools such as Cité Scolaire Internationale prepare students for both exams so that they may go on to study at German universities.

→ Where?

At Cité Scolaire Internationale



Lyon-area schools offering international education

Lyon-area schools offering international education



- ★ Day care center
- ◇ Pre-school and/or elementary school
- ▲ Elementary school and/or Junior High/high school
- Other

Apple Pie

Manager	Mrs. Palmira Martins
Levels	Provision for children from 10 weeks to 4 years old
Status	Private mini-nursery
Hours	8 am – 7 pm
Enrolment	Provision for 17 children - maximum 10 children simultaneously
Admission requirements	Pre-registration application at: www.creche-tiramisu.com
Languages taught	French and English
Average cost day school	Variable depending on the number of child-care days / package chosen
Transportation	Metro A, Massena stop
Teacher profile	French-speaking and English-speaking early years professionals
Extracurricular activities	Various and adapted to the age of children
School philosophy and mission	Every child's routine and individuality respected, support for his socialisation and introduction to the world, bilingual and bi-cultural provision.

www.creche-tiramisu.com 53 rue Massena - 69006 Lyon
tel. 06 84 70 26 35 - contact@creche-tiramisu.com

Assomption Bellevue

Head of establishment	Mr. Gilles Brousse
Principal	
(pre-school and elementary)	Mrs. Claire Brouillet
Principal of Junior High	Mrs. Emmanuelle Perbet
Principal of High School	Mr. Richard Grille
Levels	Pre-school, elementary, Junior High School, High School, higher education
Status	Private School under contract with the State
Hours	- Monday, Tuesday, Thursday, Friday 8.15 am to 11.45 am ; 1.30 pm to 4.30 pm in pre-school and elementary - From Monday to Friday 8 am to 12 am and 1.45 pm to 4.40 pm in Junior High School and High School except Wednesday for Junior High School
Enrolment	Autumn 2015: 1,900 enrolled
Admission requirements	Interview + test
Languages taught	ML1: English and German ML2: German, Spanish and Italian ML3: Chinese, Italian and Russian
Average cost day school	Bilingual primary school €1,200 per year Bilingual secondary school €1,830 per year Bilingual High School €1,300 per year
Transportation	Bus #8, #C7, #C10, #15, #17, #47, #63, #82, #85, #88, #JD11, #JD12, #JD13, #114-119-120-145-751 ; Rhône county council : Brignais, Brindas, Chaponost, Charly, Communay, Feyzin, Millery, Orlienas, St Symphonien d'Ozon, Serezin, Simandre, Solaize, Soucieu en Jarrest, Ternay, Vourles
Program	French, part of which is taught in English Preparation for the Cambridge examinations
Teacher profile	Ordinary and Advanced competitive teaching qualifications + English speakers
Extracurricular activities	Child-minding (mornings from 7.30 am and evenings until 6 pm), Directed studies, Half board, High School boarding for girls, Student residences for higher education
School philosophy	Catholic school (catechetics, highlights), religious dimension of culture

www.assomption-bellevue.org - 39 quai Jean-Jacques Rousseau - 69350 La Mulatière
tel. 04 72 66 30 80 - fax 04 72 66 30 90 - contact@assomption-bellevue.org
- Higher education (BTS vocational qualification and preparatory classes)
172 avenue Jean Jaurès - 69007 Lyon

Baby Nursery

Levels	Day-care nursery
Status	Association
Hours	7.30 am - 6.20 pm
Enrolment	24 places
Languages taught	French, English
Transportation	Tram T2, bus # C8 and C22, Ambroise Paré bus stop

22 avenue Rockefeller - 69008 Lyon
(in the premises of the Natecia private hospital)
Tel. 09 62 56 77 17 / baby.nursery@orange.fr
www.noalys.com/index.php/creche_natecia_lyon.html

Bébés Bilingues

Levels	Day-care nursery
Status	Association
Hours	Monday – Friday, 7.30 am – 6.20 pm
Enrolment	30 children from 2 and a half months to 4 years
Admission requirements	Have a project that requires learning two languages
Languages taught	English, French
Transportation	Metro B Debourg station , Bus #C22, S3 or Zi6

www.lesbebesbilingues.com 83, avenue Debourg (corner 23, rue Georges Gouy) – 69007 Lyon
Tel. 04 72 76 28 84 - contact@lesbebesbilingues.com

Bonvena - Les Petits Plus

Director	Mrs Héléna Hugot
Age group	Pre-schoolers (maternelle pupils) of mixed-age from 2 to 6 years
Status	Association
Hours	Monday, Tuesday and Thursday: 8:30-11:30 and 13:30-16:30 / Wednesday and Friday: 8:30-11:30
Enrolment	25
Admission requirements	Application and interview, the aim being to strike a balance between age groups, family income and parental involvement within the structure
Languages	French, English
Average cost	From 0 to 475 euros per month, depending on income
Transportation	Subway "Jean Macé" Tram T1 "Centre Berthelot" Buses no. C22 and 60 "Pont Gallieni RG" Buses no. 4, C7, C12, C14, 35 and Z6 "Jean Macé"
Programme	The education policy is focused on the development of the child and their interpersonal skills (self-esteem, critical thinking, autonomy etc.) with a focus on a diversified education (National curriculum, Montessori, Reggio Emilia, Steiner etc.), co-education (involvement of parents) and social and cultural diversity.
Teacher Profile	1 National Curriculum teacher and trained in the Reggio Emilia approach, 1 Montessori educator (AMI), 1 native English speaking assistant.
Extracurricular Activities	Under construction for the 2017 school year
Characteristics of the school	<ul style="list-style-type: none"> - the school's education policy is supervised by a scientific committee (neuroscientists, national education teachers, Montessori educators, and specialists in positive education) - parental involvement, with a committee of parents involved in school life - the school is located within a hub for social innovation and sustainable development - a co-working space allows parents to work near their children - workshops for children and / or parents as well as work placements are regularly organised

www.lespetitsplus.org /bonvena 107 rue de Marseille - 69007 Lyon
bonvena@lespetitsplus.org

Cité Scolaire Internationale (CSI)

Principal (High School)	Mr. Guinot
Deputy principal (High School)	Mrs. Houssemand
Deputy principal (Junior High School)	Mr Fino
Principal (elementary school)	Mr. Nakouri
Levels	Elementary, Junior High School, High School 9 international sections 1 bi-national section (ABIBAC) 2 European sections 1 general section for sectorised High School students
Status	State school
Hours	8 am - 5.25 pm Monday to Friday
Enrolment	Primary school: 479 pupils. Secondary school: 691 pupils. High School: 850 pupils.
Admission requirements	In the international section: On records and written and oral tests in section language. Positioning tests in French and mathematics for the non French-speaking students of the secondary school and High School. One admission session: end of June
Languages taught	English, German, Spanish, Italian, Portuguese, Polish, Arabic, Chinese and Japanese
Cost	Free, except for the private English-speaking and Japanese international sections
Transportation	Metro line B: Stade de Gerland station. Bus # 60, C22 and S3. Tram T1 Ten Direct Junior and general council shuttles serve the school
Program	French National Curriculum and specific programs defined by the partner countries of the international and bi-national sections
Teacher profile	State education and native national higher education graduates for the teachers of specific tuition in languages, history-geography and mathematics in the international and bi-national sections
School philosophy and mission	Promote excellent education enhanced by bilingualism and multiculturalism Ensure the integration of foreign pupils into the French educational system Support international mobility in educational paths Develop cultural and artistic paths Educational cooperation with the partner countries of the international /European sections Contribute to the strengthening of the region's international appeal Pass on a world of common heritage to be shared Implement an education policy for health and well-being
Extracurricular activities	Drama, choir, cinema, orchestra, literary meetings/lectures, cultural weeks, travel, matching, Comenius European exchange program, preparation for Political Studies Institutes entrance examinations, workshops and scientific, literary and economics competitions, school newspaper, High School cinema, International award, MUN, culture and photo clubs, athletic associations, wilderness expeditions

www.csilyon.fr 2 place Montréal - 69361 Lyon cedex 07
Switchboard: 04 78 69 60 06
- Primary school office: ext. 6005 - ecolep.internationale@numericable.fr
- Secondary/ High School management office: ext. 6002
- Secondary school pupils' office: ext. 6013 - ce.0693479g@ac-lyon.fr
- High School pupils' office: ext. 6007 - ce.0693479g@ac-lyon.fr

Cité Scolaire Internationale (CSI) / German and Abibac sections

Section Heads	Mr. Kayser: German-speaking section (primary, secondary), Abibac LL department Mrs. Girel: Abibac HG section
Program	Primary school: German program Secondary school: 4 hours LL (language and literature) and 2 hours HG (history/geography) High School/ Abibac: LL 6 hours, HG 3.5 - 5 hours
Teacher profile	German mother tongue Primary school: German diplomas, teachers seconded from Germany Secondary school and High School: German diplomas and French competitive examinations, status: State Education teachers
Diplomas issued	Secondary school: International option Diplôme du Brevet (Junior High School diploma) High School/ Abibac: double Abitur and baccalaureate certificate (bi-national diploma)
Admission requirements	Secondary school: non-French-speaking pupils must pass a test in the German language and a level test in mathematics and French. They will then, if necessary, be taught French as a foreign language. High School/Abibac: admission on records and motivation interview, level tests in maths and French for non French-speaking candidates
School Exchanges with German schools (Aix-la Chapelle and Bonn) The Parents' Association for German-speaking pupils (APEG) supports the section's work.	

www.csi-community.com/apeg/index.htm Tel. 04 78 69 60 06 (ext. 6133)

Cité Scolaire Internationale (CSI) / English section

Section Head	Mr. Robert Miller
Program	Primary school: 6 hours a week in English Secondary school: 6 hours per week: 4 hours of English language and literature and 2 hours of history/geography High School: 6/9 hours per week depending on the chosen option
Enrolment	30 nationalities. 50% of pupils from abroad
Teacher profile	English and American mother tongue; National Diplomas (or equivalent)
Diplomas issued	International option of French National Diploma. International option of the French Baccalaureate with the choice between an American or British curriculum. IGSCCE (Assessment and Qualifications Alliance)/language-literature,history; SAT
Extracurricular activities	A large number of activities on offer: Duke of Edinburgh/international Award Model United Nations, Theatre Support service for integration into English-speaking universities One-to-one tuition for non French-speakers

Tel. 04 78 69 60 06 (ext. 6135)

Cité Scolaire Internationale (CSI) / English and German European section

Program	National standards for European sections with extra hours and teaching of a non-linguistic discipline (NLD) in the section language. The common NLD is history/geography
Recruitment	In Y11 for the euro - English section : assignment by the Academy
Enrolment	Secondary school: Euro-German: 80 pupils High School: Euro-German: 61 pupils; Euro- English: 89 pupils
Diplomas issued	In Y11: A2/B1 certification (DSD1) In Y13: B2/C1 certification (Deutsches Sprachdiplom II) European Baccalaureate with honours. Honours are awarded to pupils who receive 12 or more marks in Modern Languages and 10 or more marks in the NLD Preparation of the Cambridge certificate validating level B1 in Euro-English Y11 CSI is a member of the PASCH network
Exchange program	In Euro-German: school exchange program with schools in Bonn and Berlin. With Glasgow and Philadelphia, for Euro-English. The two sections participate in the Comenius, Brigitte Sauzay and Voltaire international mobility programs, for conducting research projects between European Union classes and/or stays of 2, 3 or 6 months in a European or American partner school.

Cité Scolaire Internationale (CSI) / Spanish section

Section Head	Mr. Rogriquez
Section profile	Free state section
Program	Primary, secondary, High School: language, literature, history/geography in Spanish language
Enrolment	2012: 232 enrolled. French, Spanish and Latin-American pupils and other nationalities
Teacher profile	Officials of the Spanish State, paid by Spain
Diplomas issued	International option of French National Diploma and Baccalaureate. Spanish baccalaureate, DELE
Extracurricular activities	The section provides a program of activities subsidised by the Institut Cervantès de Lyon and the parents' association (APESE): travel, exchange, exhibitions, library, department celebrations, etc.

Tel. 04 78 69 60 06 (ext. 6134) - seccion.lyon@mecd.es

Cité Scolaire Internationale (CSI) / Italian section

Section Heads	Primary school: Mrs. Papetti / Secondary school: Mrs. d'Alberti / High School: Mr. Messina
Teacher profile	Mother tongue Italian, paid by the Italian government
Diplomas issued	International Option Junior High diploma, International Option Baccalaureate which gives admission to any university in Italy without need for further language exams
The parent association (APESI) actively participates in all the activities offered by the section: trips and exchanges.	

Tel. 04 78 69 60 06 (ext. 6132)

Cité Scolaire Internationale (CSI) / Japanese section

Section Head	Fumiko Bouvard-Tsurusaki
Program	Primary, secondary, High School (Y11): 6 hours per week: 4 hours of study of Japanese language and literature, 2 hours History/Geography / High School (Yrs 12 & 13): 8 hours per week: 6 hours of study of Japanese language and literature, 2 hours History/Geography
Teacher profile	Japanese mother tongue; national Diplomas (or equivalent)
Diplomas issued	International option of the national diploma in Japanese International option of the baccalaureate in Japanese

French lessons are arranged for students who do not have full command of this language. Supplementary mathematics lessons are arranged for foreign pupils. The section benefits from mixed funding provided by the Japanese Government, the City of Lyon, the Rhône-Alpes region, a few Japanese companies and by contributions from parents.

Tel. 04 78 69 60 06 (ext. 6025)

Cité Scolaire Internationale (CSI) / Polish section

Section Head	Mrs. Ewa Matczak
Program	Primary school: 6 hours language. Secondary school 4 hours of language and literature and 2 hours of History/Geography. High School: 5 hours of language and literature and 2 hours of History/Geography
Enrolment	128 pupils including 47% from abroad (Polish)
Teacher profile	Polish mother tongue
Diplomas issued	International option of French National Diploma (Junior High School diploma). International option of Baccalaureate

The Parents' Association for the Polish section (APESP) supports the extracurricular activities. Collaboration with the Consulate General of Poland for all cultural and artistic events

Tel. 04 78 69 60 06 - ewamatczak@hotmail.com

Cité Scolaire Internationale (CSI) / Portuguese section

Section Head	Mr. Viveiros
Program	Primary school – 6 hours a week in Portuguese Secondary school – 6 hours a week in Portuguese: 4 hours language and literature; 2 hours History – Geography High School – 6/8 hours a week in Portuguese: (Y11) 4 hours language and literature; 2 hours History – Geography / (Y12) 4 hours language and literature; 3 hours History – Geography / (Y13) 5 hours language and literature; 3 hours History – Geography.
Teacher profile	Portuguese mother tongue, graduates
Diplomas issued	International option of French National Diploma (Junior High School diploma) International option of French Baccalaureate

A large number of extracurricular cultural activities set up during the year in conjunction with the Camões Centre for Portuguese Language at Lumière Lyon 2 University, other international establishments and other international sections.

The Parents' Association for the Portuguese section (APESLP) supports the section's work.

Tel. 04 78 69 60 06 - csi.section.portugaise@gmail.com

Cité Scolaire Internationale (CSI) / Arabic section

Section Head	Mrs. Nayla Imbert
Enrolment	Opening in 2011 at secondary school. Opening in 2015 at high level school
Program	National program and IOB
Teacher profile	Natives, EN certified
Diplomas issued	International option of French National Diploma (Junior High School diploma) International option of Baccalaureate

Cultural and artistic extracurricular activities offered in conjunction with the Parents' Association for the Arabic-speaking section (APESAR) and the Moroccan consulate.

Tel. 04 78 69 60 06

Cité Scolaire Internationale (CSI) / Chinese section

Section Head	Mrs. Shuang Zhao
Program	Primary school: 6 hours of Chinese language Secondary school opens in Autumn term 2013: 4 hours language and literature and 2 hours mathematics
Teacher profile	Native speakers, recruited by the Hanban
Diplomas issued	International option of French National Diploma (Junior High School diploma) (2016). International option of Baccalaureate (2019)
Association	APESC

Tel. 04 78 69 60 05

L'École de l'Optimisme de l'Ouest Lyonnais

Founder	Sébastien Lethiec
Principal	Claire Wataré
Levels	Pre-school and elementary - from 2 years old / Montessori bilingual pedagogy
Status	Private non accredited establishment
Hours	8:30 am to 4 :30 pm on Monday, Tuesday, Thursday and Friday + day-care 4:30 pm to -6:30 pm 8:30 am to 6 :30 for Wednesday clubs
Enrolment	Opening September 2021 - Number of target pupils = 80
Languages taught	French and English
Cost	€530 per month in Pre-school, €590 per month in elementary school
Transportation	Buses lines 3, 19, 55, S15
Program	L'École de l'Optimisme de l'Ouest Lyonnais is a bilingual Montessori school (pre-school and elementary school). We believe that optimism is a lifestyle choice that develops our ability to be happy and to contribute positively to the world. In our Montessori school, we want to help children discover their ability to take up challenges, to acquire positive and constructive qualities of interpersonal skills, to grow in joy and respect for themselves, others and their environment. English is at the heart of all learning from pre-school. We are indeed convinced of the importance of openness to an international culture for children from an early age, and this cultural openness also involves teaching, activities and gatherings in English. We promote individualized progression of learning and personalized monitoring of children, while drawing parallels with the skills required by National Education.
Teacher profile	A French-speaking teacher and an English-speaking teacher per class All our teachers have followed a Montessori training
Extracurricular activities	Bilingual Montessori club on Wednesday (half day or full day) English lessons Yoga, musical awakening, improvisation theatre Holidays clubs Day-car from 4:30 pm to 6:30 pm
Admission requirements	Preregistration on: https://optimisme-lyon.scolana.com/fr

5bis route de Champagne - 69130 Ecully
Phone number: 0681120122
direction-lyon@ecole-de-loptimisme.fr
<https://ecole-de-loptimisme.fr/ecully/>

École des Grillons - Saint-Rambert

Principal	Mrs Caroline Hennequin
Courses offered	English International Section
Status	Public primary school
Schedule	4 hours of English language and literature
Number of students enrolled	6 students in CM (4th year of primary school) this year - exceptional conditions due to the section opening in September 2018.
Languages taught	English
Average cost	Free
Transportation	TCL standard bus line 2. The school is in the middle of a pedestrian zone.
Curriculum	*English curriculum based on British curriculum and International Section curriculum. - English is taught through the study of English literature and culture. - Oral and written comprehension and expression and interaction activities. - Emphasis on reading, drama and students' written and oral production.
Teache profiles	Laurence Alves Gay, English teacher
Extracurricular activities	Clubs and workshops offered at the school outside of class time
Admission	Entrance exam assessing the child's skills in oral and written comprehension and expression and interactive skills. The child's eagerness and motivation are also key criteria.

Contact details 12 Rue Marc Boegner, 69009 Lyon
+33 (0)4 78 64 19 16
prim9.grillons@mairie-lyon.fr
Blog of Grillons : <http://ecole.les.grillons.blogs.laclassse.com/>

École les Lettres Dorées

Principal	Eloïse Joubert and Sophie Rousseau
Status	New private non-accredited bilingual school
Hours	8:30am -11:30am / 1:30pm – 4:30pm from Monday to Friday, Wednesdays excluded
Enrolment	54 children
Languages taught	French and English
Cost	From 2 to 5 years old : 450 € / month / from 6 to 11 years old : 550€ / month Discounts for siblings
Transportation	Metro line D / bus 69 / bus C16
Program	English immersion – all subjects are covered in French and English Childcare (4:45pm -6pm) every day after school and Montessori holiday courses Language lessons available at extra cost all year with the World in Motion centre (English, German, Chinese, Spanish, Italian)
Teacher profile	Montessori educators and early childhood educators
Extracurricular activities	Ecology, sports, music workshops, art workshops with the Petite Academie, French, maths, botany, geography, history, everyday life, sensorial life. Respects the national curriculum
Admission	All year Based on qualifications

Contact details **31 rue des tuiliers, 69008 Lyon**
04 72 62 50 36

English School Lyon - ESL LYON

Principal	Mrs Julie Roussin-Bouchard
Ages taught	Pre-school, Primary
Status	Private, independent primary
Hours	From Monday to Friday: 09:00 - 12:00 / 14:00 - 17:00 Day care center: 07:45 - 09:00 and 17:00 - 18:45 Study period: 17:00 - 17:30 for primary pupils, and CE1 / 17:00 - 18:00 for CE2, CM1 and CM2
Number of students	100 - A maximum of 20 students per class
Languages taught	French and English
Cost	Monthly rate over 10 months: €430 including day care facilities, study period, and after-school activities
Transportation	Bus 72, 98 stop: Marcy Sources
Program	Each week: 5 half days in French and 4 half days in English French, maths, history and geography taught in French History, geography (workshops and support) and Sciences taught in English In English: grammar, vocabulary, poetry France's Education Nationale is followed Cambridge examinations board Study periods provided by teachers (1/2 hr for primary and CE1 and 1hr for CE2, CM1 and CM2)
Teacher profile	French and international native speakers
Extracurricular activities	Dance, Sport, Music, Theatre (mandatory) Wednesday activities in line with the pupils' rhythm. Religious culture (all religions are taught) Information technology CM1-CM2 Canteen lunch (local products) or packed lunch from home. Play time between midday and 14:00 (chess, scrabble, board games etc.) Free access to the library (books in French and English) Trips abroad each year Celebrations all year long Dress code: school polo shirt or sweater are mandatory
School philosophy and mission	Each child is treated as an individual and classes are tailored to suit their needs. 'High Potential' children will be taught accordingly. The individuality of each child is recognised. Positive reinforcement, boosting the children's confidence.
Admission requirements	Interview and school record

www.esl-lyon.com **701 rue du Vallon - 69280 Marcy l'Étoile (opposite Parc de Lacroix Laval)**
+33 (0) 481 916 776 – +33 (0) 625 582 021
info@esl-lyon.com

Greenfield

Principal	Mrs. Fabienne Clément
Founder and Manager	Mrs. Isabelle Fiquet
Levels	Pre-school and elementary (age 2 - 11 yrs)
Status	Private non accredited establishment except CM2 accredited
Hours	Monday, Tuesday, Thursday, Friday 8 am - 6 pm
Enrolment	In 2012: 160 children
Languages taught	French (50% of the time) and English (50% of the time)
Cost	Nursery school: €345/ month over 10 months Primary school: €355/ month over 10 months
Transportation	Bus # 71 and 40
Program	French and math in French; History, Geography and Sciences in English + in English: grammar, poetry, writing, spelling
Teacher profile	English: English-speaking teacher with English or American teaching degree French: all teachers have experience in the public or private sector. One teacher with national teaching degree (who teaches Y5 and Y6)
Extracurricular activities	Gymnastics in elementary classes; artistic activities (La Petite Académie), computer/internet; cafeteria (optional), morning and afternoon snack provided by the school in pre-school; before and after-school care: starting 8 am, until 6 pm; field trips.
School philosophy and mission	Secular school; centered on learning 2 languages at an early age; make children enjoy school, provide a solid foundation and prepare pupils for Junior High School
Admission requirements	Interview for pre-school; interview and school records for elementary

www.greenfield.fr
 Pre-school : 14 rue de la Mairie – 69660 Collonges-au-Mont-d’Or
 Elementary : 31 rue Clémenceeau – 69660 Collonges-au-Mont-d’Or
 Tel. 04 72 27 87 80 – info@greenfield.fr

International School of Lyon (ISL)

Principal	Mr. David Johnson
IB&High School co-ordinator	Mrs. Lee O'Reilly
Middle School co-ordinator	Mrs. Lee O'Reilly
Primary co-ordinator	Mrs. Alison Pattinson
Levels	Pre-school, primary, secondary : from 3 to 18 years old
Status	Private, Authorized by the IBO for the Primary Years Program and the International Baccalaureate Diploma Program, authorized by Cambridge for the IGCSE, member of the English Language Schools Association France (ELSA).
Hours	5 days a week – Monday, Tuesday, Thursday 8.20 am - 3.35 pm, Wednesday 8.20 am - 12.05 pm, Friday 8.20 am - 2.55 pm
Enrolment	330 pupils including 80 % from abroad. 45 different nationalities, from Europe (50%), America (20%), Asia/Australia (18%), Africa (12%)
Admission requirements	School records, assessment and interview when it is possible
Languages taught	English is the language of instruction, but the French is also taught in the mother tongue and as a foreign language ; English (ESOL) support if necessary
Cost	From €8,464 per year (pre-school) to €18,576 per year (première & terminale); least 15% for individuals Enrolment fees: €3,750 (pre-school) to €5,000 (secondary)
Transportation	From Perrache train station: bus # 8. From Saint Genis Laval or Sainte-Foy-lès-Lyon center: bus # 17 “Le Grand Roule” bus stop. From Franchville: bus #C19 to Sainte Foy village.
Program	ISL is a school of the International Baccalaureate; Cambridge and IGCSE in Y10 & Y11; Diplomas issued: IGCSE, IB, High School Diploma
Teacher profile	Multinational team; Highly qualified and experienced
Extracurricular activities	These activities (more than 20) take place in the afternoon or during the lunch break, and include sports, music, art, MUN, yearbook and many more.
School philosophy	Instruction in English for children of expatriate families or French families living in an international context, by putting the emphasis on the global citizenship, intercultural understanding, creativity, critical thinking, the autonomy and collaboration, while preparing students for graduate studies everywhere in the world

www.islyon.org
 80 chemin du Grand Roule – 69110 Sainte-Foy-lès-Lyon
 Tel. 04 78 86 61 90 – Fax. 04 78 86 61 98 - info@islyon.org

Jean Perrin

Principal	Mrs Florence Conio-Minssieux
Secretary	Mrs Isabelle Troadec
Courses offered	English / British International Section
Status	Public School
Schedule	- 8 hours of English language and literature - 4 hours of history and geography, including 2 hours in English
Number of students enrolled	- 12 students in year six of the International Section (first year of middle school) this year - exceptional conditions due to the first class opening in September 2018 - opening of year 5 of the International Section (second year of middle school) in September 2019
Languages taught	English
Average cost	Free
Transportation	- Many "Juniors Directs" (JD) school buses serve Jean Perrin from St Cyr, Poleymieux, Vaise station: JD 53, 54, 55, 56, 57, 58 - Standard TCL bus system as well
Curriculum	*English curriculum based on British curriculum and International Section curriculum. - English is taught through the study of English literature and culture. - Oral and written comprehension and expression and interaction activities. - Emphasis on reading, drama and students' written and oral production. *The history and geography curriculum is available on the blog. > The English and history and geography curricula are available on the International Section's blog: https://jeanperrinsib.blogspot.com/
Teacher profiles	Laurence Alves Gay, English teacher and Roberto Cavalcante, history and geography teacher
Extracurricular activities	Clubs and workshops offered at the middle school
Admission	Entrance exam assessing the child's skills in oral and written comprehension and expression and interactive skills. The child's eagerness and motivation are also key criteria.

Contact details
 14 Rue du Maréchal de Lattre de Tassigny, 69009 Lyon
 +33 (0)4 72 85 62 50
jeanperrinsib@gmail.com
 Blog of the International Section: <https://jeanperrinsib.blogspot.com/>
 Blog of the middle school: <http://jeanperrin.etab.ac-lyon.fr/spip/>

Jean Perrin

Principal	Mr Olivier Coutarel
Secretary	Mrs Anne-Marie Bonnet
Courses offered	British International Section
Status	Public school
Schedule	- 8 am to 5:45 pm on Monday - Tuesday - Thursday - Friday - 8 am to 1 pm on Wednesday
Number of students enrolled	30 availabilities. Opening of a year 11 class (sophomore year) in 2019
Languages taught	English
Average cost	Contribution to exchange fees
Transportation	-From Gare de Vaise (TER train – metro line D) and 3 buses (2-20-71) : 8 minutes - Junior Direct Buses: 53, 54, 55, 56, 57, 58
Curriculum	Students follow the same curriculum as regular students, with the exception of English and English Literature classes (7h) and History and Geography classes (2h in French, 2h in English) If they are English speakers, they receive help for classes in French. They are gathered into one class. They sit the French Baccalauréat with an international option (OIB)
Teacher profiles	Teachers are recruited from specific positions nationwide Language teachers are native speakers
Extracurricular activities	Exchanges with Commonwealth countries Links to the local cultural environment
Admission	Applications in May including written and oral tests The section is intended for English-speaking students Open to French-speaking students if they meet necessary linguistic and academic standards.

Contact details
 Lycée Jean Perrin, Section Internationale Anglais
 Monsieur Roberto Cavalcante
 48 rue Pierre Baizet
 CP 415 69338 Lyon CEDEX 09
 E-mail : ce.0690082p@ac-lyon.fr
 Website : www.frama.link/jean-perrin

Jean Perrin

Principal	Mr Olivier Coutarel
Secretary	Mrs Anne-Marie Bonnet
Courses offered	Secondary level : German International Section - Abibac
Status	Public school
Schedule	- 8 am to 5:45 pm on Monday - Tuesday - Thursday - Friday - 8 am to 1 pm on Wednesday
Number of students enrolled	25 availablilites for each level (year 11 / sophomore year - year 12 / junior year - year 13 / senior year)
Languages taught	German
Average cost	Contribution to exchange fees
Transportation	-From Gare de Vaise (TER train – metro line D) and 3 buses (2-20-71) : 8 minutes - Junior Direct Buses: 53, 54, 55, 56, 57, 58
Curriculum	Students follow the same curriculum as regular students, with the exception of German classes (6h) and History and Geography classes in German (4h) They are gathered into one class. They sit the French Baccalauréat with 2 adapted tests and recieve the Abitur through an agreement with the German government
Teacher profiles	Teachers are recruited from specific positions nationwide Language teachers are native speakers
Extracurricular activities	Exchanges with Germany Individual mobility programs(1 to 3 months) Links to the local cultural environment (Goethe Institut, consulate...)
Admission	Applications in May including written and oral tests The section is intended for English-speaking students Open to French-speaking students if they meet necessary linguistic and academic standards.

Contact details
Lycée Jean Perrin, Section Internationale Allemand
Madame Andrea Joannin
48 rue Pierre Baizet
CP 415 69338 Lyon CEDEX 09
E-mail : ce.0690082p@ac-lyon.fr
Website : www.frama.link/binationales-jp

Jean Perrin

Principal	Mr Olivier Coutarel
Secretary	Mrs Anne-Marie Bonnet
Courses offered	Secondary level : Spanish International Section - Bachibac
Status	Public school
Schedule	- 8 am to 5:45 pm on Monday - Tuesday - Thursday - Friday - 8 am to 1 pm on Wednesday
Number of students enrolled	25 availablilites for each level (year 11 / sophomore year - year 12 / junior year - year 13 / senior year)
Languages taught	Spanish
Average cost	Contribution to exchange fees
Transportation	-From Gare de Vaise (TER train – metro line D) and 3 buses (2-20-71) : 8 minutes - Junior Direct Buses: 53, 54, 55, 56, 57, 58
Curriculum	Students follow the same curriculum as regular students, with the exception of Spanish classes (4h) and History and Geography classes in Spanish (4h) They are gathered into one class. They sit the French Baccalauréat with 2 adapted tests and recieve the Bachillerato through an agreement with the Spanish government
Teacher profiles	Teachers are recruited from specific positions nationwide Language teachers are native speakers
Extracurricular activities	Exchanges with Spain Individual mobility programs(1 month) Links to the local cultural environment
Admission	Applications in May including written and oral tests Possible additional oral test Open to French-speaking students if they meet necessary linguistic standards.

Contact details
Lycée Jean Perrin, Section Internationale Espagnol
Madame Maria-Tiscar Hammadi
48 rue Pierre Baizet
CP 415 69338 Lyon CEDEX 09
E-mail : ce.0690082p@ac-lyon.fr
Website : www.frama.link/binationales-jp

Jean Perrin

Principal	Mr Olivier Coutarel
Secretary	Mrs Anne-Marie Bonnet
Courses offered	Secondary level : Italian International Section - Esabac
Status	Public school
Schedule	- 8 am to 5:45 pm on Monday - Tuesday - Thursday - Friday - 8 am to 1 pm on Wednesday
Number of students enrolled	25 availabilites for each level (year 11 / sophomore year - year 12 / junior year - year 13 / senior year)
Languages taught	Italian
Average cost	Contribution to exchange fees
Transportation	-From Gare de Vaise (TER train – metro line D) and 3 buses (2-20-71) : 8 minutes - Junior Direct Buses: 53, 54, 55, 56, 57, 58
Curriculum	Students follow the same curriculum as regular students, with the exception of Italian classes (4h) and History and Geography classes in Italian (4h) They are gathered into one class. They sit the French Baccalauréat with 2 adapted tests and receive the Esame di stato through an agreement with the Italian government
Teacher profiles	Teachers are recruited from specific positions nationwide Language teachers are native speakers
Extracurricular activities	Exchanges with Italy Individual mobility programs(1 month) Links to the local cultural environment
Admission	Applications in May including written and oral tests Possible additional oral test Open to French-speaking students if they meet necessary linguistic standards.

Contact details
Lycée Jean Perrin, Section Internationale Italien
Madame Laura Ravaglia
48 rue Pierre Baizet
CP 415 69338 Lyon CEDEX 09
E-mail : ce.0690082p@ac-lyon.fr
Website : www.frama.link/binationales-jp

Junior Academy

Principal	Madame Sarah Latreche
Teaching	Pre-school and elementary school
Status	Private, independent school
Hours	- Monday, Tuesday, Thursday, Friday 8:20-11:45 am; 1:30- 4:30 pm - Day-care center till 6:00 pm
Students enrolled	25 places in Pre-school and 10 places in elementary school
Languages taught	French and English
Average cost	Pre-school: €4 800 per year Elementary school : €5 400€ per year
Transportation	Métro B Gare d'Oullins Bus : lines 15, 17, 18 station "Kellermann", lines 11, 12, 14, 78, 88 stop "Gare d'Oullins" ViaRhôna Direct access from A7 highway (exit La Saulaie)
Program	The Junior Academy School is a Montessori AMI school (pre-school and elementary) and bilingual French / English. The Montessori method makes it possible to respect the rhythm of each child, to support the natural development of each, while promoting confidence and self-esteem. 1/2 day in French, 1/2 day in English
Teacher profile	Montessori educators
Extracurricular activities	Bilingual Montessori workshops on Wednesdays (half day or full day) and during school holidays (educational courses). Awakening to English, creative workshops, sports activities according to the educational program established by the teaching team at the beginning of the year. Montessori tutoring
Admission requirements	Interview with the school manager

www.junioracademy.fr
24 avenue Jean Jaurès - 69600 OULLINS

06 15 80 13 81
contact@junioracademy.fr

Junior School

Levels	Day-care nursery
Status	Association
Hours	7.30 am - 6.20 pm
Enrolment	15 children from 2 and a half months to 4 years
Languages taught	French, English
Transportation	Bus # C15 or 26, Maryse Bastié bus stop

juniorschool.free.fr/creche.htm
33 rue Nieuport - 69008 Lyon
Tel. 04 78 00 60 62 - babynursery@free.fr

Kindertreff

Principal & Technical co-ordinator	Mrs. Marie Pons
Reception co-ordinator	Mrs. Marie Eil
Levels	Daycare, nursery and kindergarten
Status	Association
Hours	Monday – Friday, 8 am – 6.30 pm
Enrolment	48 children at the beginning of the year, 40 at the end, with 10% of foreigners and 60% double nationalities ; 20 children in rotation
Spoken languages	French, German
Transportation	Metro line C Croix-Rousse station, bus # S6, C13, S12, 33, 45
Extracurricular activities	Meals and snacks provided by the daycare
School philosophy	Provision for bilingual children or with an appeal to bilingualism ; awakening bilingual and bicultural ; children allocated in 2 age's groups 1-3 years old and 3-6 years old; bilingual establishment with a parenthood involvment (attendance 1.30 - 3 hours per week or administrative positions), aiming to promote autonomy of the child and community life

A " group of 4 legs " for children between 4 months to 3 years old and their parents meet every Saturday from 4 pm to 6 pm, in self-management ; Special features for the 3-6 years old group : Free-game, outside activities, pre-school work adapted to the age of the children, work on an annual thematic, as being proposed in numerous German Kindergarten ; the group is led in major part by German educator

kindertreff.fr
11 montée de la Grande Côte - 69001 Lyon
Tel. 04 78 30 55 72 - kindertreff.lyon@laposte.net

Montessori

Principal	Mrs. Françoise Neri
Levels	Pre-school and elementary school (age 2 – 12 yrs)
Status	Private non accredited establishment
Hours	Monday to Friday 8.30 am - 11.30 am and 1.30 pm - 4.30 pm (mornings only on Wednesdays) after-school child-minding 4.30 pm - 6 pm
Enrolment	Number of pupils: 130 pupils including 29% from abroad
Admission requirements	Interview
Languages taught	English, French
Cost	€475/month over 10 months, full time and degressive tariffs on the number of children in the family
Transportation	Metro line A Masséna station, Metro line B: Brotteaux station, bus #38
Program	Pre-school: introduction to English at age 2; elementary: half day in French, half day in English
Teacher profile	The classes in Kindergarten and in primary school are trained by a francophone educator and an anglophone educator
Extracurricular activities	Music, swimming at age 6, theater; field trips, retreats to the country and science retreats
School philosophy	Montessori pedagogy which enables each child to develop at his own pace and in keeping with his/her personality; children divided into 4 groups of mixed ages: 2 - 3 yrs, 3 - 6 yrs, 6 - 9 yrs and 9 - 11 yrs; a hundred of schools in France; several thousand schools around the world
A parent's association (APEM) organizes numerous extracurricular activities	

www.montessori-lyon.com
8 rue Barrier - 69006 Lyon
Tel. 04 78 24 51 32 - Fax.: 04 78 24 85 26 - info@montessori-lyon.com
Established in 1982

Ecole Montessori-Lyon Confluence

Director	Mr. Bertrand Chèze
Levels	Pre-school from 3 to 6 years old
Status	Private secular school, bilingual French/English
Hours	From Monday to Friday 8.30 am - 11.30 am and 1.30 pm - 4.30 pm, except for Wednesday 8.30 am - 11.30 am After-school child-minding 4.30 pm - 6 pm
Enrolment	25 children in 2015
Languages taught	French, English
Cost	€475 over 10 months
Transports	Tram T1
Program	Bilingual pre-school
Teacher Profile	AMI diploma and mother tongue for English
Extracurricular activities	Gardening
School philosophy	Montessori pedagogy which enables each child to develop at his own pace and in keeping with his/her personality; a hundred of schools in France; several thousands schools around the world

www.montessori-littlematernelle.com **7, Cours Bayard - 69002 Lyon**
téléphone **07 82 53 69 29** - contact@montessori-littlematernelle.com

New School

Founder of the school and of the teaching and educational	
Concept Manager	Mrs. Anne-Marie Saez
Levels	Pre-school and elementary school
Status	Private accredited establishment
Hours	From Monday to Friday: 9 am to 5 pm for pre-school and elementary school ; Home from 7:30 am to 6:30 pm
Diplomas	Cambridge diploma for the elementary school
Languages taught	French, English
Cost	€378 per month
Transportation	Tram T2, Bachut-Mairie du 8e stop; Bus 24, 62
Program	Half day in French, half day in English in pre-school and elementary school; integration of the new students in groups of English level
Teacher profile	Mother tongue
Extracurricular activities	Judo, swimming, athletics, English Club on Wednesday afternoon, library and day care center from 7:30 am to 9 am and from 5 pm to 6.30 pm included in the tariff of school ; Between 12 am and 2 pm and after 5 pm with additional financial contribution: musical, awakening, ice skating, dance, theater, plastic arts, studies (from 6 years) and school support; canteen, language trips, green class, traditional feasts in French and English
School philosophy	Secular school; Existing structures and integrated in the school : 1/ integration of children early intellectually 2/ The elementary school "La Fourmi" welcoming dyslexics, dysorthographics and dyscalculics children; The child is considered with all its differences; the educational and relational pedagogy is individualized

www.ecole-new-school.fr **67 avenue Jean Mermoz - 69008 Lyon**
Tel. **04 78 09 02 83** - accueil@new-school.eu

Ombrosa

Head of establishment	Mr. Luc Vezin
Principal of elementary school	Mrs. Marie-Christine Smith
Deputy principal of elementary school, responsible for Caluire site	Mr. Guillaume Varenne
Secretary	Mrs. Desgranges
Levels	Nursery, elementary, secondary
Status	Private, Primary School under state contract, IB Diploma accredited, accredited by Cambridge for the IGCSE
Hours	Primary school: 8.25 am - 3.10 pm; Secondary school: 8.25 am – 3.55 pm; High School: 8.25 am – 5.30 pm
Diplomas issued	French Junior High School diploma, French Baccalaureate (options S, L, ES), IGCSE, International Baccalaureate, Cambridge language certificates, Japanese Language Proficiency Test, Deutch Sprachdiplom, DELE
Enrolment	In 2015 (including Ombrosa Nursery): 1,200 children (22% from abroad)
Admission requirements	Interview (nursery); interview, school records and evaluation (elementary and secondary)
Languages taught	English and French throughout schooling, German, Japanese, Spanish and Chinese in secondary
Cost	Monthly over 10 months: from €421 to €254 per child depending on the number of children of the family; From €1259 to €707 in IB

Transportation Local bus: # 40; School bus: 5 lines daily to: Lyon 6^e , Lyon' Presqu'île', Lyon left bank, Lyon Part-Dieu, Lyon Croix-Rousse, Caluire, Villeurbanne, Bron, Oullins, Saint-Genis-Laval, the Monts d'Or, Champagne, Ecully, Sainte-Foy, Francheville

Curriculum Nursery entirely in English (learning to read in French in upper infants); dual language program in primary with alternating weeks in English and French. Bilingual secondary offering national and international programs. French and English are taught according to level (beginner to native speaker) with the help of a permanent French as a Foreign Language Workshop and ESL support. Spanish, German, Chinese and Japanese are offered as second foreign languages in secondary. International pupils receive individual coaching and support. Careers advice is available for pupils seeking to go on to further education in France or abroad

Program	National Education, Cambridge IGCSE, IB Diploma Program
Teacher profile	Mother tongue (British teachers PGCE qualified), national and international
Extracurricular activities	Clubs from 4 pm to 5.30 pm in the evening, from 1.25 pm to 4.30 pm Wednesday afternoon: gymnastics, judo, football, athletics, art, choir, IT, musicals, rugby, chess; School exchange programs abroad are integrated into the curriculum: Great Britain (last 2 years of primary), Canada (lower secondary), Germany (7th to 9th grade), Spain (9th grade, 10th grade), Japan (8th grade and 10th grade), linguistic stays in China; High School journalism workshop, Model United Nation, a range of diverse projects and the organisation of events: School Ball, Christmas Fair, integration; Pre-school supervision from 7.45 am; after school supervision from 4 pm to 6 pm and study periods from 3.30 pm to 4 pm; Self-service cafeteria

School philosophy A private non-profit secular school; a non-profit making establishment.
We aim to guide, enrich, value and bring out the best in every child confided to us by using in school and out of school activities, by providing international experience and by taking in to account the unique nature of every pupil. We are active in welcoming foreign families and wish to contribute to the international perspective and renown of Lyon and its surrounding area.

www.ombrosa.com **95 quai Clémenceau - 69300 Caluire**
Tel. **04 78 23 22 63** - Fax. **04 78 23 56 22** - ombrosa@ombrosa.fr

Ombrosa (The Nursery)

Principal	Mrs. Marie-Christine Smith
Levels	Pre-school (age 2 ½ - 5 yrs)
Status	Private accredited establishment
Hours	Monday to Friday, including Wednesday morning: 8.45 am - 11.30 am and 1.30 pm - 3.30 pm; for the final year: 8.45 am - 12 pm and 1.30 pm - 3.30 pm
Enrolment	In 2015: about 180 children (23,7% from abroad)
Languages taught	French and English
Cost	From €421 to €254 per child, depending on the number of children in the family
Transportation	Metro line A Foch station, Bus # C4 (Duquesne-Foch bus stop), 27 and 36
Program	Exclusively in English except pre-literacy in French in the final year
Teacher profile	Mother tongue (PGCE qualified for the British)
Extracurricular activities	Gymnastics clubs, judo clubs (only in final year) and artistic activities from 4.30 pm to 5.30 pm on Monday, Tuesday, Thursday and Friday; child-minding from 4 pm to 6.30 pm; optional school meals
School philosophy	A private non-profit secular school; schooling provided up to the baccalaureate at Ombrosa Caluire accessible by shuttle from Y2; educational plan: to reveal, structure, enrich and value each child entrusted to us, based on academic and extra-curricular fields, international openness and their individual personality.

www.ombrosa.com 50 rue Vendôme - 69006 Lyon - Tel. 04 78 93 71 00 - Fax.: 04 78 93 76 50
ombrosa@ombrosa.fr

Palomitas

Founder and manager	Mrs. Palmira Martins
Principal	Mrs. Nathalie Margerit
Levels	Provision for children from 10 weeks - 4 years
Status	Private mini-nursery
Hours	8 am - 7 pm
Enrolment	Provision for 17 children - maximum of 10 children simultaneously
Admission requirements	Pre-registration application at: www.creche-tiramisu.com
Languages taught	French, Spanish
Cost	Variable depending on the number of child-care days / package chosen
Transportation	Metro A République station, Bus #27
School philosophy	Every child's routine and individuality respected, support for his socialisation and introduction to the world, bilingual and bi-cultural provision.
Teacher profile	French-speaking and Italian-speaking (50%) early years professionals

www.creche-tiramisu.com 98 rue Dédieu - 69100 Villeurbanne
Tel. 06 84 70 26 35 - 04 78 27 13 66 - contact@creche-tiramisu.com

Collège Paul Emile Victor

Principal	Isabelle Geoffray
Secretary	Francesca Audemar
Teaching	Public school
Status	EPLÉ (Local public educational institution)
Hours	8 am to 12 am - 1:30 pm to 4:30 pm
Students enrolled	630 students
Languages taught	English/German /Spanish/Italian
Average cost	Free of charge
Transportation	Bus school + Buses lines C2 & C5 (TCL)
Program	Programs in accordance with Bo n°31 of August 29 specifying the operating procedures of the international sections. 4 hours of English and a reinforcement in American language and literature of 4 hours as well as 1h30 of teaching of history geography in English, then 9H30 in English.
Teacher profile	The teachers are recruited on a specific profile, native or benefiting from a long experience in the country whose language is taught.
Extracurricular activities	Handball /Sports association
Admission requirements	On file and tests

3bis, avenue Général Leclerc
69140 Rillieux-la-Pape
04 72 01 80 00
0692159X@ac-lyon.fr

Le Petit Monde

Principal	Mrs. Julie Blancard
President	Mr. Henri Gruffat
Levels	Pre-school and elementary school only 1 st and 2 nd grade (age 2 – 7 yrs)
Status	Private non accredited international establishment
Hours	4 ½ day week: 9 am - 4.30 pm (4 pm for pre-school), Monday - Friday, and Wednesday 9 am - 12 pm; part-time enrollment possible (mornings only) in pre-school (2 - 4 yrs)
Enrolment	2015: 109 pupils
Languages taught	French, English, Italian, German
Cost	€450/month
Transportation	Subway line B, Jean Jaurès station; bus # S3 André Bollier stop
Program	Total immersion in small anglophone section; Mid-time for the German-speaking section and Italian-speaking section (half a day in foreign language and half a day in French), and from the middle section for the anglophone section (half a day in English and half a day in French)
Teacher profile	Mother tongue and graduated
Extracurricular activities	Actilangues ¹ on Wednesday morning (English and German), on Wednesday afternoon (English and Spanish) and on Friday afternoon (English)
School philosophy	Small class size (15) to ensure that each child progresses at his own pace; possibility of enrolling precocious children early; encourages active participation of parents in the life of the school via the Events Committee and Work days
Admission	Nursery school: interview; primary school: assessment of language level

www.lepetitmonde.org 89 rue André Bollier - 69007 Lyon
Tel. : 04 72 71 42 36 - petitmonde@lepetitmonde.org

1. Actilangues : Fun activities with home of children from 3 to 11 years old (beginners and experienced), and Day Camp in english during school holidays

Steiner / Waldorf

Principal	Mrs. Arlette Hérault
Levels	Pre-school, elementary, secondary
Status	Private non-contract, associative status
Hours	Monday - Friday, 8.25 am - 3.45 pm; after-school care until 4.30 pm Wednesday 8.25 am - 12.15 pm/1 pm for secondary
Enrolment	Around 200 pupils (a third of which have at least one parent of foreign origin)
Languages taught	French, German and English Modern Languages
Teacher profile	Majority trained in Waldorf method of education; Co-managers of educational and cultural school activities
Diplomas aims	French Junior High School diploma or Baccalaureate
Cost	Varies according to family income: between €110 / month and €250 / month + suggested donation
Transportation	C10 bus from Place Bellecour (Lyon centre 20 min); regional lines from Perrache; car-sharing between parents
Program	Waldorf Education: 1,000 schools worldwide federation@steiner-waldorf.org There are several nursery classes in the nursery school, mixed ages from 3 to 6 years; provision for French, English and German families. -In the first year of primary school, academic subjects are taught in periods; German and English are approached orally through games, songs and nursery rhymes -13 year-olds go on a week's school exchange with a class in Germany -15 year-olds have the opportunity of a term's individual exchange abroad.
Extracurricular activities	From the youngest classes, artistic and craft activities are an integral part of the school system for all pupils, to complement the academic learning. Craft activities: sewing, woodwork, leatherwork, gardening, and discovery of farming, trades and the craft industry Artistic activities: eurhythmics (expression of the body), flute, singing, orchestra, drama, modelling, painting. Green classes, travelling abroad; the year is punctuated with celebrations
School philosophy	Non-denominational, apolitical; All the facets of our pupils' personalities are encouraged to blossom through the harmonious development of the mind, body and heart; pupils are not graded or classified until the age of 14 ; Organic school meals with fresh ingredients
Admission requirements	Appointment and meeting between the teacher, the parents and the child

www.ecole-steiner-lyon.org 6 avenue Clémenceau - 69230 Saint-Genis-Laval
Tel. 04 78 50 77 45 - Fax. 09 57 61 80 01 - secretariat@ecole-steiner-lyon.org

Tiramisú

Founder and manager	Mrs. Palmira Martins
Principal	Mrs. Nathalie Margerit
Levels	Provision for children from 10 weeks - 4 years
Status	Private mini-nursery
Hours	8 am – 7 pm, from Monday to Friday
Enrolment	Provision for 17 children - maximum of 10 children simultaneously
Admission requirements	Pre-registration application at: www.creche-tiramisu.com
Languages taught	French, Italian
Cost	Variable depending on the number of child-care days / package chosen
Transportation	Bus # C13, C18, S6 and S12
School philosophy	Every child's routine and individuality respected, support for his socialisation and introduction to the world, bilingual and bi-cultural provision
Teacher profile	French-speaking and Italian-speaking (50%) early years professionals

www.creche-tiramisu.com **4 place Sathonay - 69001 Lyon**
Tel. 06 84 70 26 35 - 04 78 27 13 66 - contact@creche-tiramisu.com

West Point

Director	Mr. Jean-Pierre Chabrier
Academic Director	Madame Cindy Thomasset
Teaching	Nursery and primary school
Status	Private school
Hours	From Monday to Friday: 9 am-12 pm / 2 pm-5 pm - Early drop off: 7 am-9 am Late pick up: 4.30 pm to 7 pm for nursery and 5 pm to 7 pm for primary (supervised homework included)
Number of students	370 children (20% of international families) 14 pupils maximum in reception class, 22 in 1 st and 2 nd years of nursery school, 25 students maximum in 3 rd year of nursery school through to Year 6 (UK) Grade 5 (US)
Languages taught	French, and English and initiation to Chinese
Admission	Interview, dossier and evaluation based on your child's performance in the class.
Average cost	Nursery: €395/month x10 months Primary €428/ month x10 months, preferential rates from 2 nd child
Transports	Access via bus : line 45, stop Valdo / line 65, stop Rue de la garenne / line C21 and C24, stop Battières Car park, rue Eisenhower
Program	Half day in French and half day in English; reading and writing in French starting in kindergarten; From reception class to Year 2: activities and conversations in English; From Year 3 (Grade 2) to Year 6 (Grade 5): writing, grammar, vocabulary, history-geography and sciences in English. Cambridge exam: Year 4 (Grade 3) and Year 6 (Grade 5) Initiation to Chinese for Year 5 (Grade 4) et Year 6 (Grade 5).
Teacher profile	French and English speaking state qualified teachers of various nationalities (Australia, Canada, Ireland, England)
Extracurricular activities	Judo, field hockey, chess, team sports, digital tech and IT depending on the class (obligatory) Outside of school time: Dance, music, Olympic sports, tennis, painting/sculpture, theatre, football, zumba/hip-hop/ballet, piano and creative workshops (optinal) Canteen and organic meals prepared in-house Ski trips, school trips, and a trip to England.

www.ecole-west-point.fr **15 rue de la Garenne - 69005 Lyon**
Tel. 04 72 16 08 14 - westpoint69@hotmail.fr

Lyon Hoshu Jugyoko - Association for the Development of the Japanese Language and Culture

President	Mrs. Hisano Marret
Educational director	Mrs. Chikako Kitada
Levels	From nursery school to Y13
Status	Association 1901
Hours	Saturday 10.15 am – 12.45 pm
Diplomas issued	N/A. Preparation for the Japanese baccaalaureate examination and Japanese universities' entrance examinations.
Enrolment	95 pupils (2011)
Admission requirements	Have a Japanese parent or similar (for example, educated in a Japanese school)
Cost	€ 468, reduction for the 2nd child onwards.
Transportation	Bus # C3, C11 and C26
Program	Japanese mother tongue lessons, with a program recommended by Japanese State Education. For the international class, a program adapted to the levels and needs of the children.
Teacher profile	Japanese mother tongue
School philosophy	Effective learning because of low number of pupils, work given in lessons adapted to each individual child.

adlcj.blogspot.fr Post: c/o Mme Kitada, 261 allée du bourg des Verchères - 69380 Dommartin
www.cours-japonais-lyon-adlcj.sitew.com adlcj@wanadoo.fr
Established in 1988

Teremok Culture Center for Russian - speaking children Shkola Association

President	Mrs. Dupont
Secretary	Mrs. Neuville
Levels	Pre-school, elementary
Status	Association
Hours	Wednesday 1.30 pm – 5.20 pm / Saturday 9 am – 1.30 pm
Enrolment	110 children
Cost	€5/hour, annual membership €30
Transportation	C13, C16, C11, 25, C9 bus, Sacré-Coeur bus stop
Program	Collective games, preparation for the school; learn to read and write in Russian; drawing (discovery of the Russian painting), singing, theater, Russian civilisation and culture
Teacher profile	Russian mother tongue
School philosophy	Bilingual development, window to the culture of Russian-speaking countries

www.chkola.org - Château Sans Souci
36 avenue Lacassagne - 69003 Lyon
- Maison de quartier
263 rue Paul Bert 69003 Lyon
Tel. 04 78 60 58 83 - 04 48 85 30 63 - contact@chkola.org

F.A.Q. on education in the Lyon area

What equivalencies in school levels are there between our home country and the country we are living in?

See the table of class equivalencies by age group (page 4).

What subjects are taught at school in France?

The main subjects taught in French schools include language skills and French, mathematics, civics, basic science, foreign and regional languages, art, physical education, classical languages (Latin and Greek), philosophy, physics, chemistry, biology ("S.V.T." or "Sciences de la Vie et de la Terre"), economics, social studies, and technology. Other "less typical", more practical subjects such as cooking, painting, theater, first aid, etc. are not mandatory and may be studied after school hours (for example Wednesday afternoon, between noon and 2:00 pm or after 5:00 pm).

What is the overall level of the schools?

Lyon's public and private schools have a very good reputation. Each year, several magazines and newspapers (Le Progrès, Le Point, Le Nouvel Economiste, Lyon Mag' and others) publish rankings of Lyon's public and private schools based on a variety of criteria including the success rate in national exams, etc.

You can also view the statistics at www.education.gouv.fr

Are there special school buses for students?

Some private schools such as the Assomption Bellevue bilingual school, Cité Scolaire Internationale and Ombrosa provide school bus service (contact the school for information). However, the city of Lyon and its surrounding area are well served by an extensive public transport system including buses, a subway and tramways that run frequently (around every 5 minutes) during rush hours, i.e. between 7:30 and 9:00 am, between 11:30 am and 2:00 pm and between 4:00 and 6:30 pm. For more information, contact TCL (Lyon Public Transport System) at 0820 42 7000 or visit www.tcl.fr

Who pays for school supplies?

In public and private elementary (primaire) and Junior High Schools (collège), schoolbooks are free. However, in High School (lycée) the student or their parents must purchase schoolbooks. Other supplies (notebooks, pencils, etc.) must be purchased by the student or their parents. Depending on household income, the Lyon Family Assistance Center ("CAF" or "Caisse d'Allocations Familiales de l'Agglomération Lyonnaise") can provide financial aid to help families purchase school supplies at the start of the academic year.

Can students bring their own lunch to school?

In France, classes are held in the morning and the afternoon. For this reason, all public and private schools are organized so that the students eat at the school cafeteria. Students must pay to eat at the cafeteria. Generally, the lunch is provided by the school and healthy, balanced meals are served. In some schools, such as Le Petit Monde, students may bring their meals, but this is still quite rare.

Do parents participate in school life?

In France, parents play an important role in school life. In each class, 2 parents volunteer to represent all of the parents at the "class council meeting" ("conseil de classe") held with teachers once every term. In "parent-run" full-time day care centers and some part-time day care centers, parents are required to come to the center and help take care of the children. The Kindertreff bilingual day care center requires parents to devote from 1½ to 3 hours per week. In addition, there are often parent associations related to students' extracurricular activities (such as those for the international sections at the C.S.I.)

Is there an association for the education of disabled children?

HANDISCOL is an association that provides all of the necessary information and aid for both parents of handicapped children and teachers alike.

Toll free number: 0 810 55 55 00

How many students are there in each class?

In public schools, class size usually varies. There are about thirty pupils per class, but there may be some schools with classes having more than 30 students (ask for information prior to registration).

At international schools, however, class sizes are generally smaller and some sections may have classes with only 15 to 20 students.

As expatriates must often choose their children's school before actually coming to Lyon, how and where can they get all of the information they need?

Web support is provided on the ADERLY Internet site at www.investinlyon.com. This site gives you on-line access to all of the information contained in this guide.

Are there any extracurricular sports or arts programs that take place on the school premises?

There are mandatory sports activities in all schools, from pre-school up to High School. These activities include gym, swimming and climbing. Some schools offer other sports or cultural activities, but these take place after school hours, i.e. on Wednesday afternoons, between noon and 2:00 pm or after 5:30 pm. Parents may also choose to register their children for other activities at the local Youth Centers ("M.J.C." or "Maison des Jeunes et de la Culture") or private music schools or sports clubs.

In general, all schools have a gymnasium. Sometimes, for certain sports activities, children must leave the school premises (swimming classes, for example). In such cases, the students are always accompanied by teachers and / or parents.

Directory

Information about schooling in Lyon (for French and foreign nationals), about daily life, housing, recreation, health, etc.

Académie de Lyon (school board)

92 rue de Marseille - BP 7227
69354 Lyon cedex 07
Tel. 04 72 80 60 60 - fax 04 78 58 54 78
Opening hours: 8.30am-12.30pm
and 1.30-5pm - www.ac-lyon.fr
tel. 04 72 80 60 60 - cab@ac-lyon.fr

**Centre d'Information Internationale
(international information center)**

100 rue Hénon
69004 Lyon
Tel. 04 78 28 37 09
cii.lyon@ac-lyon.fr

CRIJ (regional youth information center)

66 cours Charlemagne
69002 Lyon
Tel. 04 72 77 00 66 - fax 04 72 77 04 39
www.crijrhonealpes.fr

CROUS (student services center)

59 rue de la Madeleine
69365 Lyon cedex 07
Tel. 04 72 80 17 70 - fax 04 72 80 17 99
www.crous-lyon.fr

International relocation professionals

Aderly can provide you with a list of relocation companies located in the Lyon region.

The National Association of relocation and mobility professionals (SNPRM) can provide you with a list of its members.
www.relocation-france.org

You will find all the information about Lyon and its region (useful numbers, health, administrative processes, transport, etc.) in the Guide for new arrivals downloadable from our website at www.investinlyon.com under «downloads» then «thematic brochures»





Glossary

ADERLY: Lyon Area Economic Development Agency

Agrément: Accreditation given every 5 years by the Mother and Child Protection Service. It certifies that an at-home daycare provider is in good health, that their home is clean and comfortable, that the provider has had appropriate childcare training, etc

A Level: Advanced Level

ACEPP: National Association of Parent-Run Day Care Centers

ADLCJ: Association for the Development of Japanese Language and Culture

APEG (CSI): German Section Parents Association

APEL: Private School Parents Association

APEM: Montessori School Parents Association

APESA (CSI): English Section Parents Association

APESE (CSI): Spanish Section Parents Association

APESI (CSI): Italian Section Parents Association

APESP (CSI): Polish Section Parents Association

APT: Advanced Placement Test

AQA: Assessment and Qualifications Alliance: English association offering a variety of qualifications and services such as the GCSE, the GCE, access to High School, etc

AS Level: Advanced Supplementary Level

AVF: French City Welcome Center (Accueil des Villes Françaises)

Bac: Baccalauréat: French High School diploma

Bac +1/+8: 1 year / 8 years of study after High School diploma (Baccalauréat)

Bac général ES: General Baccalauréat with a special focus on economics and social studies

Bac général L: General Baccalauréat with a

special focus on literature and languages

Bac général S: General Baccalauréat with a special focus on science and math

Bac mention européenne: Baccalauréat with European Option. High School diploma for students in 'European sections' featuring a specific exam in a subject taught in the main foreign language the student is learning (English, German, Italian, etc.)

Bac option internationale: Baccalauréat with International Option. High School diploma for students in 'international sections' featuring, in addition to the standard examinations, oral and written tests in languages, literature and history-geography

Bac technique SMS: Technical Baccalauréat with a focus on medical and social science

Bac technologique ST2S: Technical Baccalauréat with a focus on Health and Social technologies

Bac technologique STAV: Technical Baccalauréat with a focus on agronomics and life science

Bac technologique STD2A: Technical Baccalauréat with a focus on Design and Applied Art technologies

Bac technologique STG: Technical Baccalauréat with a focus on Management technologies

Bac technologique STHR: Technical Baccalauréat with a focus on Hospitality and Catering

Bac technologique STI: Technical Baccalauréat with a focus on industrial technology

Bac technologique STI2D: Technical Baccalauréat with a focus on Industrial and Sustainable development technologies

Bac technologique STMG: Technical Baccalauréat with a focus on Management and Administration technologies

Bac technologique STL: Technical

Baccalauréat with a focus on laboratory skills and techniques

Bac technologique STT: Technical Baccalauréat with a focus on technology for the tertiary sector

BEP: Certificate of Vocational Proficiency (Brevet d'Etudes Professionnelles) obtained after Junior High School

Brevet des collèges: Junior High School diploma. Awarded to students who pass 3 written exams in French, math and history – geography at the end of 9th grade.

Brevet des collèges à Option Internationale: Junior High School diploma with International Option. Awarded to students in international sections. In addition to the standard brevet exams, the international

option also features exams in a foreign language

BT: Specialized Technical Diploma (Brevet Technique)

BTS: Advanced Vocational Diploma (Brevet de Technicien Supérieur), awarded to students who have completed two years of study after High School

Bulletin scolaire: Report card, sent by teachers home each term. Contains the student's grades and any comments on their behavior

CAE: Certificate in Advanced English
CAF(AL): Caisse d'Allocation Familiales (de Lyon): Family Assistance Center: manages the various financial aid given to families such as housing allowances or welfare benefits

Cantine: School cafeteria. The place where students eat the lunch provided by the school

CAP: Vocational Training Certificate (Certificat d'Aptitude Professionnelle). Awarded to students who have left Junior High School in order to pursue vocational studies

Car de ramassage: School bus. Picks students up in the morning and drops them off at home after school

Carnet de santé: Personal health records. A booklet that details a person's medical history

CAS: Creation, Activity Service (International Baccalaureate)

CDI: The school library

CE 1: Equivalent of 2nd grade in the USA

CE 2: Equivalent of 3rd grade in the USA

CELLI: Certificate of Italian Language Studies

CIEF: International Center for French Studies (Centre International d'Études Françaises)

C.I.O.: Career Guidance Resource Center (Centre d'Information et d'Orientation)

CIRA: Inter-Ministry Agency for Administrative Information

Classe de découverte: A class retreat lasting one or more days during which students put into practice a subject they have studied during the year

Classe de neige: A class retreat in the mountains during the winter. Literally "snow class"

Classe verte: A class retreat in the countryside. Literally "green class"

CM 1: Equivalent of 4th Grade in the USA

CM 2: Equivalent of 5th Grade in the USA

Colle: A punishment in which a student must come to school in addition to regular class hours

Conseil de classe: Literally "class council meeting". A meeting between teachers, class representatives and parents' representatives held each term to get an update on each student's work

Contrat d'alternance: A work contract in which a student alternates between in-school vocational/technical training and an internship in a company

CP: Equivalent of 1st grade in the USA

CPE: Certificate of Proficiency in English

C.P.E.: A school counselor (Conseiller Principal d'Éducation) who works closely with teachers and school management staff to help students succeed in school

CRIJ: Regional Youth Information Center

CROUS: Student Services Center

CSI: Cité Scolaire Internationale public school

DALF: Advanced Certificate in French Language

DEA: Research-oriented Graduate Degree

DELE: Certificate of Spanish as a Foreign Language

Délégué de classe: Class delegate who participates in the "class council meeting"

DELFL: Elementary Certificate in French Language

DESS: Professionally-oriented Graduate Degree

Deutsches Sprachdiplom der KMK: Certificate in German Language (Kultusministerkonferenz)

Directeur: Principal of an elementary school

DUEST: University Diploma of Scientific and Technical Studies

Duke of Edinburgh: Cultural activities, sports and volunteer work program

DUT: University Diploma in Technology

ECIS: European Council of International Schools

Enfant dyscalculique: A child who has trouble learning math

Enfant dyslexique: A child who has trouble learning to read

Enfant dysorthographique: A child who has trouble learning how to spell

Enfant « propre »: A child who is potty-trained

EPLE: Local public educational institution

Étude: A type of study hall. A room where students do their homework under the watchful eye of a teacher or monitor. These sessions may be held as class sessions in addition to regular class hours and may

feature a specific curriculum determined by the principal

FCE: First Certificate in English

FCPE: Federation of Public School Parents Councils

FLE: French as a Foreign Language

Garderie: A care facility that takes in young children outside of school hours (generally before and after school)

Grandes Écoles: France's elite, ultra-competitive higher education institutes such as the École Normale Supérieure (training of future teachers), Écoles de Commerce (business schools) and Écoles d'Ingénieurs/Écoles Centrales (engineering schools), etc.

Hors contrat: A private school that is not accredited by the National Education Ministry and has its own curriculum

IB: International Baccalaureate (High School diploma)

IBO: International Baccalaureate Organization (in Geneva)

IGCSE: International General Certificate of Secondary Education

ILCF: French Language and Culture Institute

ILCP: Portuguese Language and Culture Institute

Internat: boarding facilities of a school

ISL: International School of Lyon

Justificatif de domicile: A document proving that you have bought a home or are renting one. In France, this may be an electricity or telephone bill, etc.

Livret de famille: Literally "family booklet". This administrative document, which details the composition of a family, is required in order to obtain a French passport or national identity card

LV 1: The main foreign language a student studies at school

LV 2: The second foreign language a student studies at school

LV 3: The third foreign language a student studies at school

MJC: Youth and Culture Community Center

MSA: Middle Schools Association

NEASC: New English Association of Schools and Colleges

OIB: International Option of the Baccalaureate. High School diploma for students in 'International sections' featuring specific exams in language, literature and history-geography in the foreign language that the student speaks (English, German, Italian, etc.)

PEEP: Public School Parents Association

PGCE: Post - Graduate Certificate of Education

PLSI: Lyon Program for the Information Society

PMI: Mother and Child Protection Services, a social service for mothers and their children

PP: Primary Years Program (International Baccalaureate)

PPCS: Middle Years Program (International Baccalaureate)

Principal: Principal of a Junior High or Middle School

Proviseur: Principal of a High School

PSAT: Preliminary Scholastic Aptitude Test

Redoublement: When a student fails a grade level and must repeat it

Récré: Recess, when children can eat a snack and play in the courtyard/ playground

SAT: Scholastic Aptitude Test

SMIC: French Minimum Wage

SNPRM: National Union of relocation professionals, member of the Chamber of Consulting Engineers of France (CICF)

Sous contrat: A private school accredited by the National Education Ministry and has the same curriculum as a public school

SVT: Biology class

TCL: Lyonnais Public Transports

TOEFL: Test Of English as a Foreign Language

UFCV: French Association of Vacation Resorts

Zone A: Geographic area created by the National Education Ministry including the schools of Besançon, Bordeaux, Clermont-Ferrand, Dijon, Grenoble, Limoges, Lyon, Poitiers. Used to determine when schools are on vacation

Zone B: Geographic area created by the National Education Ministry including the schools of Aix-Marseille, Amiens, Caen, Lille, Nancy-Metz, Nantes, Nice, Orléans, Tours, Reims, Rennes, Rouen, Strasbourg. Used to determine when schools are on vacation

Zone C: Geographic area created by the National Education Ministry including the schools of Créteil, Montpellier, Paris, Versailles, Toulouse. Used to determine when schools are on vacation



ADERLY / INVEST IN LYON

Lyon Area Economic Development Agency

Place de la Bourse - 69289 Lyon Cedex 02 - France

tél. : 33 (0)4 72 40 57 50

aderly@investinlyon.com - www.investinlyon.com

